

**TU56  
DECtape transport  
engineering drawings**

The material herein is for information purposes only and is subject to change without notice. Digital Equipment Corporation assumes no responsibility for any errors which may appear herein.

These drawings and specifications herein are the property of Digital Equipment Corporation and shall not be reproduced or copied or used in whole or in part as the basis for the manufacture or sale of items without written permission.  
Copyright © 1975, Digital Equipment Corporation

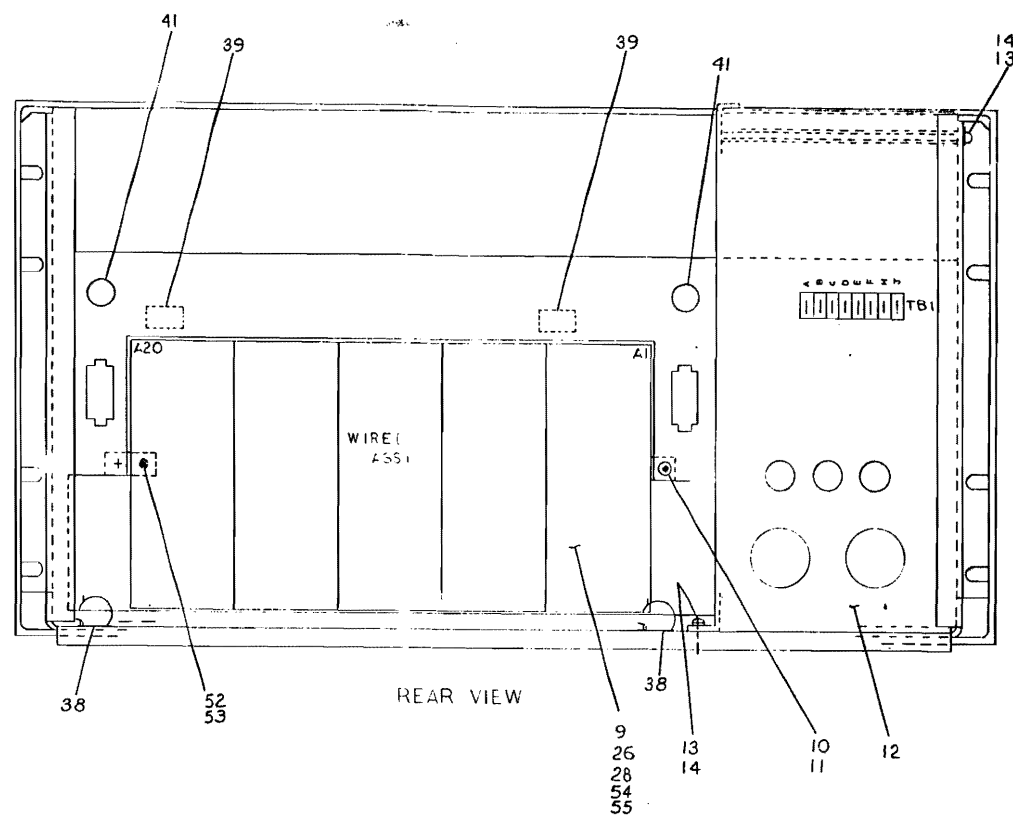




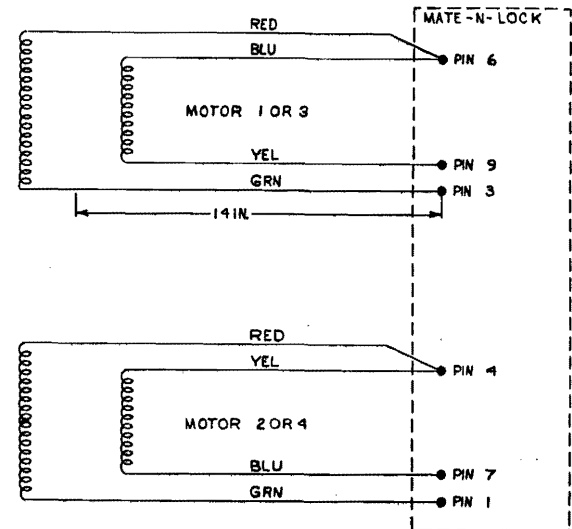


1. THESE TERMS, LOCATED ON THE REAR VIEW OF THIS DRAWING, ARE TO BE USED IN ALL DRAWINGS OF THIS EQUIPMENT.

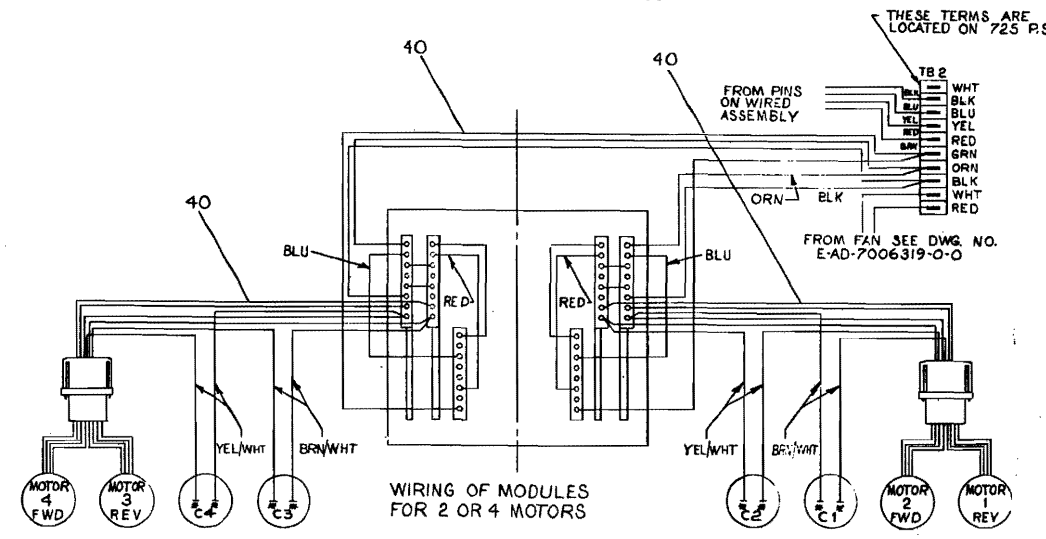
- NOTES:**
1. MOTORS SUPPLIED WITH WIRES PART NO. 33 TO BE CRIMPED ON WIRE AND INSERTED INTO PART NO. 30 AT ASSEMBLY.
  2. \* INDICATES WIRES TO BE SOLDERED IN PLACE AT POINT INDICATED.
  3. ITEM NO. 24 NOT SHOWN USE WHERE REQ'D.
  4. ~~SCREWS (2) HOLED ITEM 43 SHIPPING CRACKED WHEN BRACKET IS REMOVED. REFER SHIPMENT REPLACE SCREWS.~~
  5. PACKAGING INSTRUCTION 370002 FOR CUSTOMER SHIPMENTS AND 3700063 FOR INTERPLANT SHIPMENTS.



MOTOR WIRING DIAGRAM



THE LETTER 'F' IS TO BE MARKED ON THE BACK OF MOTORS 2 & 4 WHEN ASSEMBLED SEE DWG. NO. E-AD-7006320-0-0



REV.	DESCRIPTION	DATE	BY	APP'D.	REVISION
1	ASSEMBLY	11-7-69	GULICK		
2			HEALY		
3			VAILLANT		
4			WITTIG		
5			TOMPKINS		

QUANTITY	DESCRIPTION	PART NO.	REV.
1	TU56 ASSEMBLY	TU56-0-0	Y

TU56-0-0 Y

DIGITAL EQUIPMENT CORPORATION MAYNARD, MASSACHUSETTS <b>PARTS LIST</b>				QUANTITY / VARIATION												
MADE BY KEN GULICK		CHECKED D. HEALEY		SECTION		TU56-H	TU56	TU56-M	TU56-MR	TU56-HC	TU56-C	TU56-MD	TU56-MC	TU56-MH	TU56-MJ	
DATE 8/6/69		DATE 8/18/69		1												
ENG C. VALLIANT		PROD C. TOMPKINS		ISSUED SECT.												
DATE 8/26/69		DATE 8/26/69		1												
ITEM NO.	DWG NO. / PART NO.	DESCRIPTION														
1	E-AD-7006320-1-0	PANEL FRONT ASSEMBLY				1	-	-	-	1		1		-	-	
2	E-AD-7006320-2-0	PANEL FRONT ASSEMBLY				-	1	1	1		1		1	-	-	
3	E-AD-7006319-1-0	CHASSIS ASSEMBLY				1	-	-	-	1		1		1	1	
4	E-AD-7006319-2-0	CHASSIS ASSEMBLY				-	1	1	1		1		1	-	-	
5	9006070-1	SCR PAN 10-32 x 3/8 LG SST				4	4	4	4	4	4	4	4	4	4	4
6	1209600	LID SUPPORT #43067 CHANDLER & FARQUHAR				2	2	2	2	2	2	2	2	2	2	2
7	9008135	WASH CURVED #U250-0075 ASSOC SPR				4	4	4	4	4	4	4	4	4	4	4
8	9008146	WASH FLAT .630.D.X.23I.D.X.048 THK SST				4	4	4	4	4	4	4	4	4	4	4
9	D-AD-7006321-0-0	WIRED ASSY TU56				1	1	1	1	1	1	1	1	1	1	1
10	9006076-1	SCR PHL HD PAN #10-32 X 3/4 LG SST				2	2	2	2	2	2	2	2	2	2	2
11	9006565	NUT KEPS #10-32				6	2	2	2	6	2	6	2	6	6	6
12	D-UA-725-0-0	POWER SUPPLY 725 +				1	1	1	1	1	1	1	1	1	1	1
13	9006021-1	SCR PHL HD PAN 6-32 X 5/16 LG SST				3	3	3	3	3	3	3	3	3	3	3
14	9006632	WASH EXT TOOTH #6 HOLE				3	3	3	3	3	3	3	3	3	3	3
15	9007917	CONN SOLDERLESS #50902 ARKLESS				32	64	64	64	32	64	32	64	32	32	32
16	9007193	CONN SOLDERLESS #3000541B				3	6	6	6	3	6	3	6	3	3	3
17	<del>9107360-55</del>	<del>WIRE #18 AWG STRD TEFLO INS (GRN)</del>				<del>AR</del>	<del>AR</del>			<del>AR</del>	<del>AR</del>	<del>AR</del>	<del>AR</del>	<del>AR</del>	<del>AR</del>	<del>AR</del>
18	<del>9107360-33</del>	<del>WIRE #18 AWG STRD TEFLO INS (ORN)</del>				<del>AR</del>	<del>AR</del>			<del>AR</del>	<del>AR</del>	<del>AR</del>	<del>AR</del>	<del>AR</del>	<del>AR</del>	<del>AR</del>
19	<del>9107430-45</del>	<del>WIRE #18 AWG STRD TEFLO INS (GRN)</del>				<del>AR</del>	<del>AR</del>			<del>AR</del>	<del>AR</del>	<del>AR</del>	<del>AR</del>	<del>AR</del>	<del>AR</del>	<del>AR</del>
20	9107360-00	WIRE #18 AWG STRD TEFLO INS (BLK)				AR	AR	A/R	A/R	AR	AR	AR	AR	A/R	A/R	
21	<del>9107360-66</del>	<del>WIRE #18 AWG STRD TEFLO INS (BLU)</del>				<del>AR</del>	<del>AR</del>			<del>AR</del>	<del>AR</del>	<del>AR</del>	<del>AR</del>	<del>AR</del>	<del>AR</del>	<del>AR</del>
22	<del>9107360-22</del>	<del>WIRE #18 AWG STRD TEFLO INS (RED)</del>				<del>AR</del>	<del>AR</del>			<del>AR</del>	<del>AR</del>	<del>AR</del>	<del>AR</del>	<del>AR</del>	<del>AR</del>	<del>AR</del>
TITLE TU56 ASSEMBLY				ASSY NO. E-UA-TU56-0-0		SIZE CODE A PL		NUMBER TU56-0-0				REV Y		ECO NO. 7006319 00003		
				SHEET 1 OF 4		DIST.										

DIGITAL EQUIPMENT CORPORATION MAYNARD, MASSACHUSETTS <b>PARTS LIST</b>				QUANTITY / VARIATION												
MADE BY KEN GULICK		CHECKED D. HEALEY		SECTION		TU56-H	TU56	TU56-M	TU56-MR	TU56-HC	TU56-C	TU56-MD	TU56-MC	TU56-MH	TU56-MJ	
DATE 8/6/71		DATE 8/19/71		1												
ENG C. VALLIANT		PROD E.R. TOMPKINS		ISSUED SECT.												
DATE 8/26/69		DATE 8/26/69		1												
ITEM NO.	DWG NO. / PART NO.	DESCRIPTION														
<del>23</del>	<del>9007430-56</del>	<del>WIRE #18 AWG TWP TEF INS BLU/GRN</del>				<del>AR</del>	<del>AR</del>									
<del>24</del>	<del>9007031</del>	<del>TIE WRAP #SST-18 PANDUIT</del>				<del>AR</del>	<del>AR</del>			<del>AR</del>	<del>AR</del>	<del>AR</del>	<del>AR</del>			
25	D-IA-7407534-0-0	COVER PLATE - HALF				1	-	-	-	1		1		1	1	
26	C-IA-7405152-1-0	INFO CABLE				1	1	1	1					1	1	
<del>27</del>	<del>D-IA-7006223-0-0</del>	<del>INTERCONNECTION CABLE</del>				<del>1</del>	<del>1</del>	<del>1</del>	<del>1</del>					<del>1</del>	<del>1</del>	
28	D-UA-RC02X-3-0	CABLE RIBBON M908-M908				1	1	1	1					1	1	
<del>29</del>	<del>7006697</del>	<del>TU56 MOTOR CONNECTOR CABLE</del>				<del>1</del>	<del>1</del>			<del>1</del>	<del>2</del>	<del>1</del>	<del>2</del>			
30	1209350-09	MATE-N-LOCK SOCKET HOUSING (9 PIN)				1	2	2	2	1	2	1	2	1	1	1
<del>31</del>	<del>7006695</del>	<del>TU56 CARD CONNECTOR CABLE (R)</del>				<del>0</del>	<del>1</del>				<del>1</del>		<del>1</del>			
32	D-IA-7006412-0-0	OPTION CABLE TU56				1	1	1	1					1	1	1
<del>32</del>	<del>7006696</del>	<del>TU56 CARD CONNECTOR CABLE (L)</del>				<del>1</del>	<del>1</del>			<del>1</del>	<del>1</del>	<del>1</del>	<del>1</del>			
<del>33</del>	<del>1209379</del>	<del>PIN, CONNECTOR</del>				<del>8</del>	<del>16</del>	<del>16</del>	<del>16</del>	<del>8</del>	<del>16</del>	<del>8</del>	<del>16</del>	<del>8</del>	<del>8</del>	<del>8</del>
34**	C-IA-7408007-0-0	BRACKET, RT, ANGLE SUPPORT				2	2	2	2			2	2	2	2	
35**	E-IA-7408009-0-0	SPACER, MTG BRACKET				1	1	1	1			1	1	1	1	1
36**	C-MD-7408322-0-0	SPACER BLOCK				2	2	2	2	2	2	2	2	2	2	2
37**	C-MD-7408321-0-0	MOUNTING BRACKET				1	1	1	1	1	1	1	1	1	1	1
38	9008340-0	DEKASP PVC HARNESS CLASP (DK 1/2-375F)				2	2	2	2	2	2	2	2	2	2	2
39	9008341-0	DEKASP PVC HARNESS CLASP (DK -188F)				2	2	2	2	2	2	2	2	2	2	2
40	7006981-0-0	TU56 WIRING HARNESS				1	1	1	1	1	1	1	1	1	1	1
41	9007857	GROMMET				2	2	2	2	2	2	2	2	2	2	2
42	9008150	LUG #10 COPPER, TIN PLATED				1	1	1	1	1	1	1	1	1	1	1
REF	E-AD-7008487-2	TABLE TOP COVER ASSY. (TDCOV KIT)							1							
TITLE TU56 ASSEMBLY				ASSY NO. E-UA-TU56-0-0		SIZE CODE A PL		NUMBER TU56-0-0				REV Y		ECO NO.		
				SHEET 2 OF 4		DIST.										



This drawing and specifications, herein, are the property of Digital Equipment Corporation and shall not be reproduced or copied or used in whole or in part as the basis for the manufacture or sale of items without written permission.

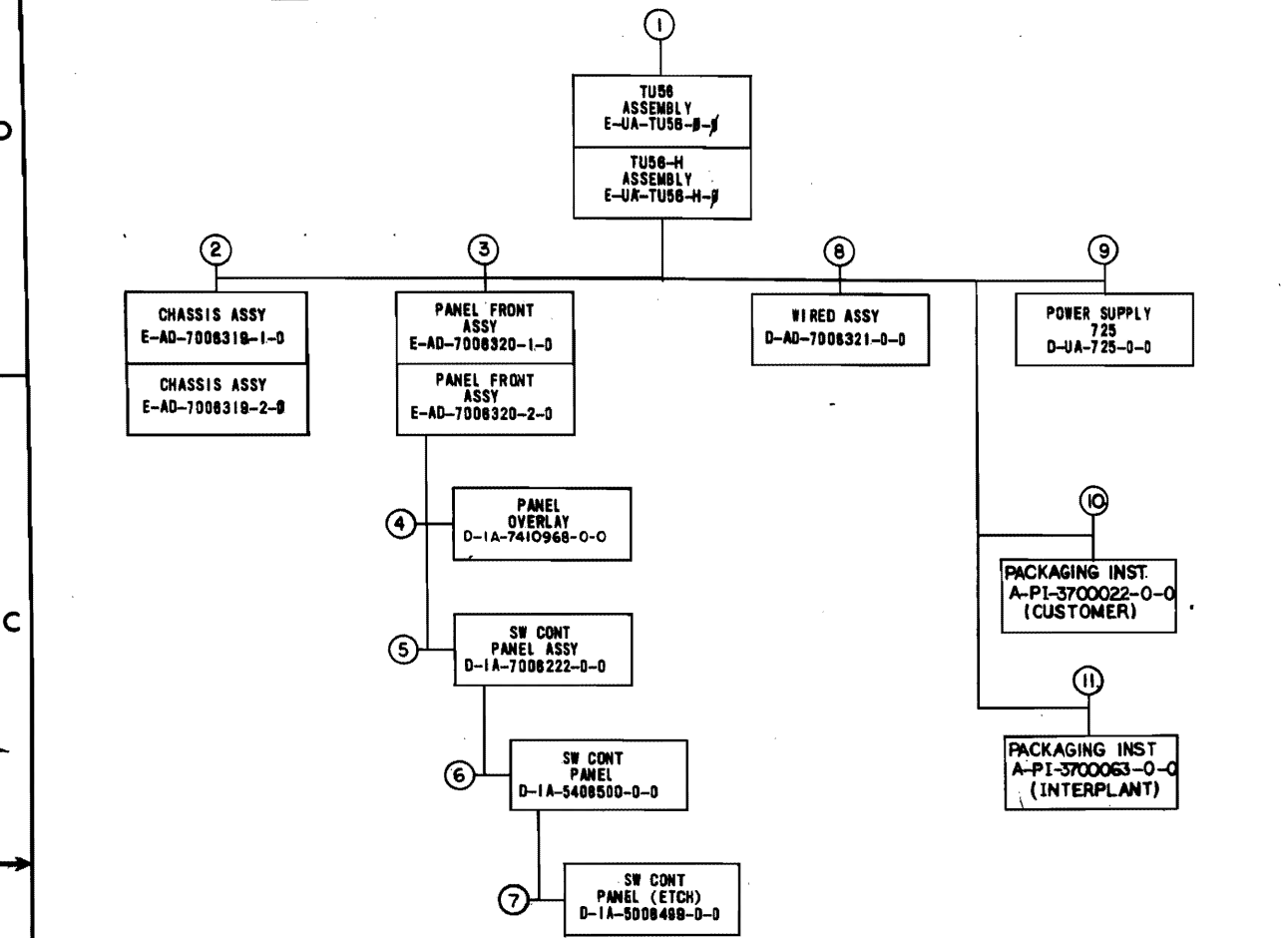


Table with columns: MECHANICAL, ELECTRICAL, DEPT USAGE. Rows include descriptions of parts like TU56 ASSEMBLY, CHASSIS ASSY, PANEL FRONT ASSY, WIRED ASSY, POWER SUPPLY, and various packaging instructions with their respective part numbers.

Table with columns: REV, CHG, NO, DATE, BY, APPR. Lists revision history for the drawing, including revision numbers (A through R) and dates.

Form containing drawing metadata: PARTS LIST, TITLE (DWG INDEX LIST TU56), NUMBER (D DI TU56-0-1), and other technical specifications.

DRWG NO	REV LTR
K-WL-TU56-Ø-2	D

REVISIONS			
REV LTR	ECO NO	DATE	ENG
A	TU56-00005	12-8-67	E.K.
B	TU56-00009	1-30-70	E.K.
C	TU56-00021	4-13-70	E.K.
D	TU56-00026	5-21-70	E.K.

FIRST USED ON OPTION/MODEL  
TU56

DRAWN	DATE
GULICK	7-8-69
CHECKED	DATE
<i>D. Kady</i>	8-20-69
ENG	DATE
<i>E. Lutting</i>	8/25/69
PROJ. ENG	DATE
<i>E. Lutting</i>	8/25/69
PROD	DATE
<i>E. R. Tompkins</i>	8/26/69



TITLE  
TU56  
DEC TAPE

FOR TAPE\* FILE\*

NEXT HIGHER ASSY  
TU56

SIZE	CODE	DWG. NO.	REV LTR
K	WL	TU56-Ø-2	D

SCALE NONE SHEET 1 OF 1 DIST.



DIGITAL EQUIPMENT CORPORATION MAYNARD, MASSACHUSETTS <b>PARTS LIST</b>			QUANTITY / VARIATION													
MADE BY R. RYHER		CHECKED D. HEALY		SECTION		TU56- $\phi$ -MU	TU56-H-MU	TU56-M-MU	TU56-MH-MU	TU56-MR-MU	TU56-MJ-MU	TU56-C-MU	TU56-HC-MU	TU56-MC-MU	TU56-MD-MU	
DATE 7/23/69		DATE 8/6/69		1												
ENG <i>[Signature]</i>		PROD <i>[Signature]</i>		ISSUED SECT.												
DATE 5/20/69		DATE 8/20/69		1												
ITEM NO.	DWG NO. / PART NO.	DESCRIPTION														
	G859	CLOCK REGULATOR G859				1	1	1	1	1	1	1	1	1	1	
	W513	LEVEL AMPLIFIER W513*				2	1	2	1	2	1	0	0	0	0	
	<del>M507</del>	<del>BUS CONVERTER M507</del>				<del>2</del>	<del>2</del>									
	M531	NEGATIVE INPUT CONVERTER				1	1	1	1	1	1	0	0	0	0	
	M $\phi$ 4 $\phi$	SOLENOID DRIVER M $\phi$ 4 $\phi$				2	1	2	1	2	1	2	1	2	1	
	G851	RELAY G851				2	1	2	1	2	1	2	1	2	1	
	G888	MANCHESTER READER, WRITER G888				0	0	5	5	5	5	0	0	5	5	
	M117	6-4 INPUT NAND GATES M117				2	1	2	1	2	1	2	1	2	1	
	M113	10-2 INPUT NAND GATES M113				3	2	3	2	3	2	3	2	3	2	
	M3 $\phi$ 2	DUAL DELAY MULTIVIBRATOR M3 $\phi$ 2				1	1	1	1	1	1	1	1	1	1	
	G848	MOTOR DRIVE				4	2	4	2	4	2	4	2	4	2	
	G847	DUAL MOTOR CON				2	1	2	1	2	1	2	1	2	1	
	M941	JUMPER/EXTENDER				2	1	2	1	2	1	2	1	2	1	
	G742	+ LOGIC JUMPER				1	1	1	1	1	1	1	1	1	1	
	* NOTE: SEE	D-MU-TU56- $\phi$ -MU														
TITLE MODULE UTILIZATION LIST		ASSY NO. D-MU-TU56- $\phi$ -MU		SIZE <b>A</b>	CODE <b>PL</b>	NUMBER TU56- $\phi$ -MU		RFV. <b>H</b>	ECO NO. TU56-00072							
		SHEET 1 OF 1		DIST.												





This drawing and specifications, herein, are the property of Digital Equipment Corporation and shall not be reproduced or copied or used in whole or in part as the basis for the manufacture or sale of items without written permission.

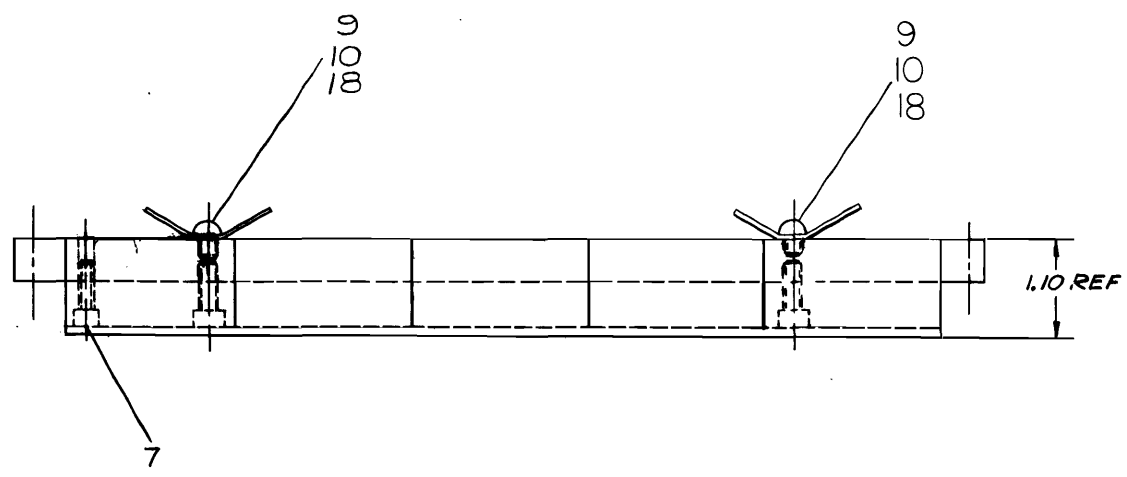
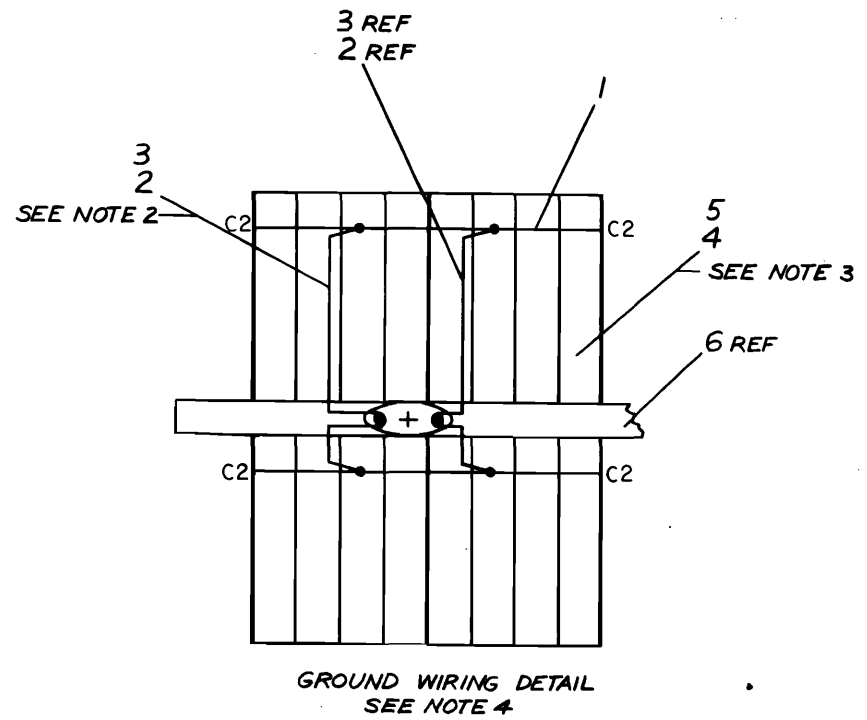
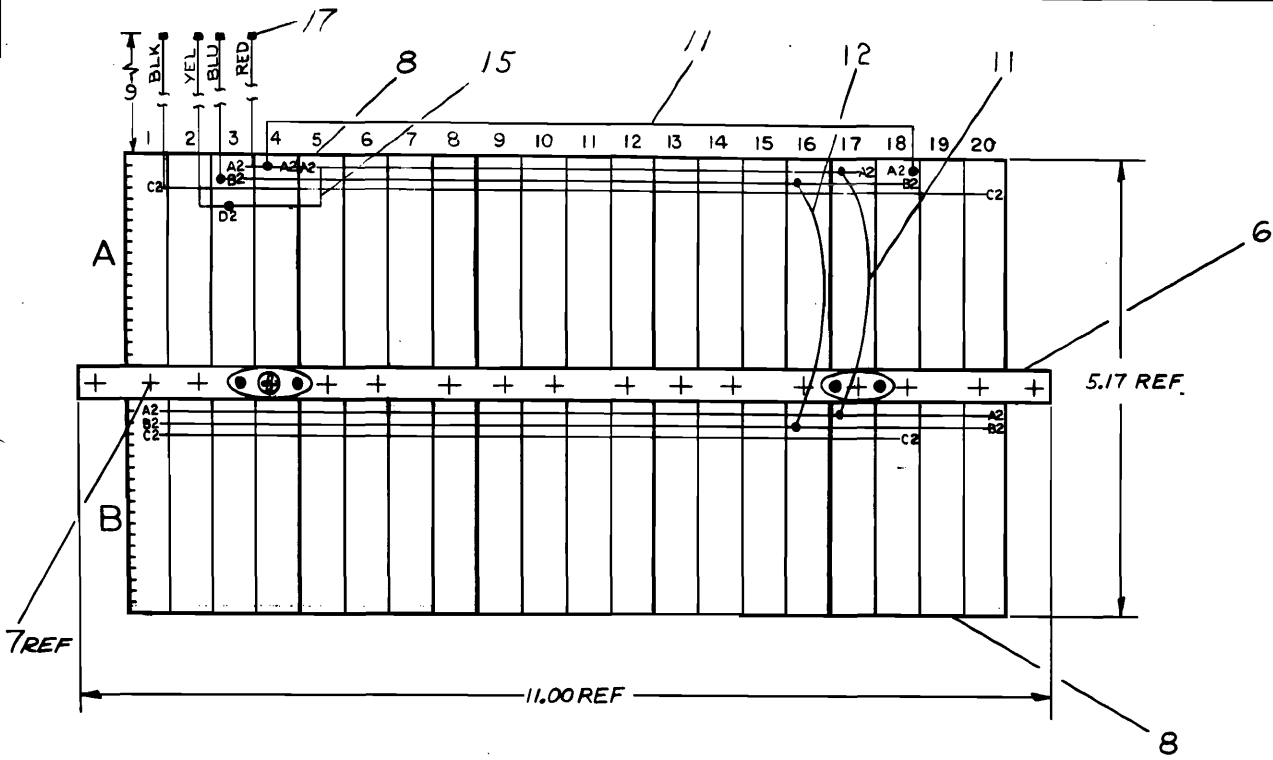
DAD 7006321-0-0 2

EXTERNAL COMPONENT LIST

ITEM NO.	COMP	POL	FROM	TO	POL
13	RESISTOR	X	A08S2	A06P1	X
13	RESISTOR	X	A08N2	A07P1	X
14	CAPACITOR	-	B08F1	A08L2	+
14	CAPACITOR	-	B08R1	B08S2	+

NOTES:

- CONNECTIONS ON ITEMS #1 & #2 TO BE SOLDERED AND LOCATED AT MINIMUM PRACTICAL HEIGHT ABOVE BLOCK
- CONN BLOCK TO BE GROUNDED TO GND LUG AS SHOWN
- USE YELLOW WIRE (ITEM #3) FOR MACHINE WRAPPED & BLUE WIRE (ITEM #4) FOR HAND WRAPPED WIRING
- JUMPER GROUND BUSSING AS SHOWN 1 PLACE



REV	CHG	NO	DATE	BY	APP
A					
B					
C					
D					
E					
F					

FIRST USED ON OPTION/MODEL TU56	DO NOT SCALE DRAWING UNLESS OTHERWISE SPECIFIED DIMENSION IN INCHES
TOLERANCES DECIMALS .XXX = ± .005 .XX = ± .02 .X = ± .1	TOLERANCES ANGLES ± 0°30' FINAL SURFACE QUALITY 1 REMOVE BURRS AND BREAK SHARP CORNERS
MATERIAL FINISH	

QTY.	DESCRIPTION	PART NO.	ITEM NO.
	PARTS LIST		
	digital EQUIPMENT CORPORATION MAYNARD, MASSACHUSETTS		
	TITLE WIRED ASSY TU56		
	SIZE CODE DAD	NUMBER 7006321-0-0	REV E
SHEET	OF	DIST.	

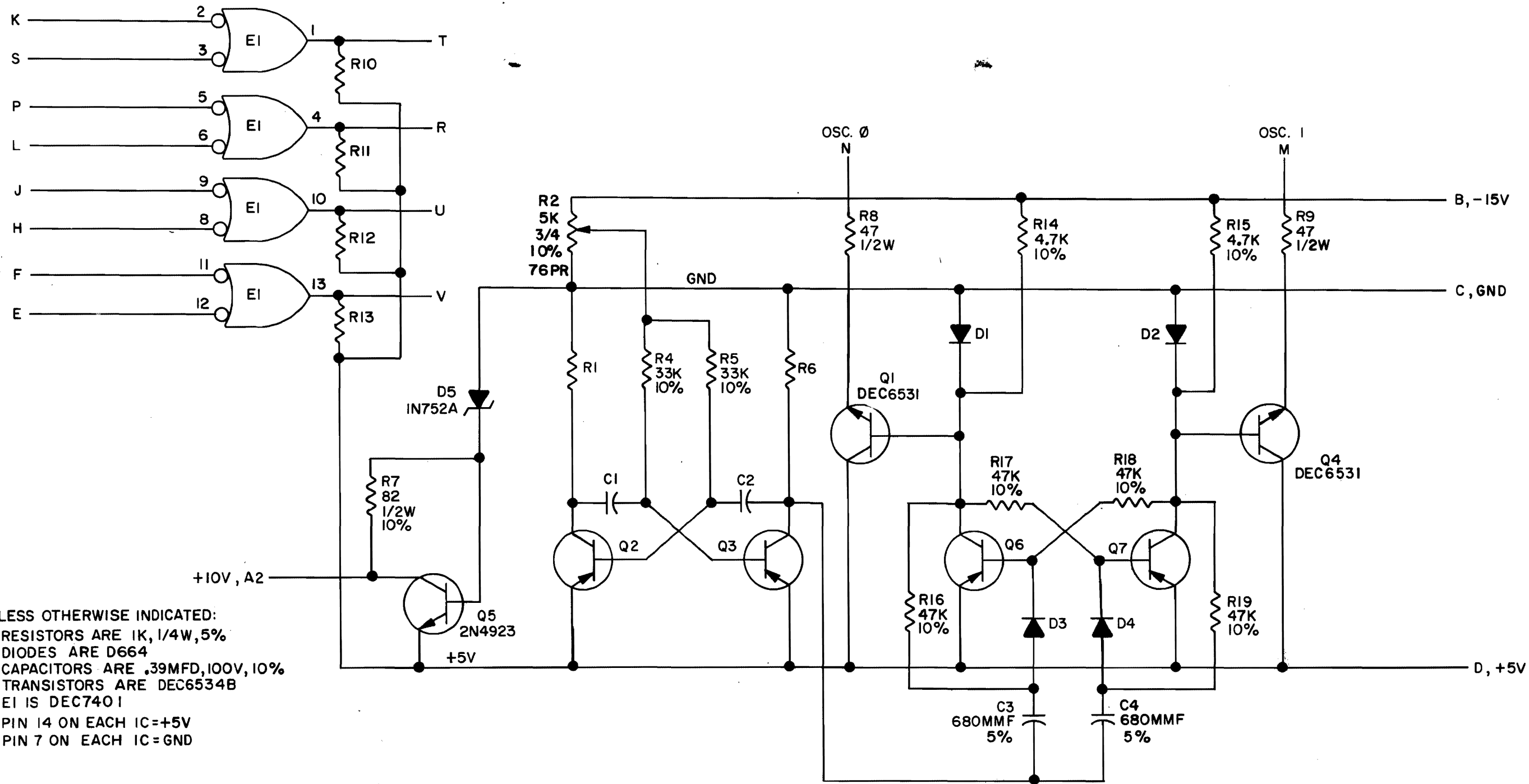
REV E  
DAD 7006321-0-0

DIGITAL EQUIPMENT CORPORATION MAYNARD, MASSACHUSETTS <b>PARTS LIST</b>				QUANTITY/VARIATION													
MADE BY KEN GULICK		CHECKED D. HEALY		SECTION		7006321-0											
DATE 6/19/59		DATE 7/23/59		1													
ENG <i>E. Hattley</i>		PROD <i>C. R. Thompson</i>		ISSUED SECT.													
DATE 7/26/59		DATE 8/26/59		1													
ITEM NO.	DWG NO./PART NO.	DESCRIPTION															
1	1205541	BUS STRIP		A/R													
2	9107560-01	22 AWG BUS WIRE		A/R													
3	9107265-09	#22 TUBING, TEFLON, WHITE		A/R													
4	9105740-44	30 AWG SOLID TEF INS. WIRE, YELLOW		A/R													
5	9105740-66	30 AWG SOLID TEF INS. WIRE, BLUE		A/R													
6	6-IA-7407393-0-0	MTG BAR (5 BLOCKS) TU56		1													
7	9006120	SCR PHL HD SELF-TAPPING 8-32 x 5/8		10													
8	1205348	288 PIN CONN BLOCK		5													
9	9006775	TERMINAL #2116-08-00 SHAKEPROOF		2													
10	9008143	SCR PHL HD SELF-TAPPING 8-32 x 1/2		2													
11	9107350-22	22 AWG STRD TEF INS WIRE, RED		A/R													
12	9107530-66	22 AWG STRD TEF INS WIRE, BLU		A/R													
13	7408015	RESISTOR 100 OHMS 1/4 W 5% CCW/TERMI PTS		2													
14	7408016	CAPACITOR 22 MFD 35V S. TANT W/TERMI PTS		2													
REF	K-WL-TU56-0-2	WIRE LIST		X													
15	9107350-44	22 AWG STRD TEF INS WIRE, YEL		A/R													
16	9107350-00	22 AWG STRD TEF INS WIRE, BLK		A/R													
17	9007917	CONN. SOLDERLESS #50902 ARKLES		4													
18	9006634	WASHER INT #8		2													
TITLE WIRED ASSY TU56				ASSY NO. D-AD-7006321-0-0		SIZE CODE <b>A PL</b>		NUMBER 7006321-0-0				REV <b>F</b>		ECO NO. 7006321-00001			
				SHEET 1 OF 1		DIST.											

DIGITAL EQUIPMENT CORPORATION MAYNARD, MASSACHUSETTS				LEGEND		QUANTITY / VARIATION									
MADE BY J. INGLEDUE DATE 5-31-72		CHECKED 7-7-72 DATE FOR J. INGLEDUE H. DRAB		SECTION 1		PA	PAPER TAPE ASCII								
ENG H. DRAB DATE 7-7-72		PROD DATE		ISSUED SECT. 2		PB	PAPER TAPE BINARY								
PM	PAPER TAPE READ-IN-MODE	TU56	TU56-H	TU56-M	TU56-MH	TU56-C	TU56-HC	KIT CHECK	BY	DATE	INSTALLATION CHECK	BY	DATE		
1.	TUC-Ø1	Head Cleaning Kit				1	1	1	1	Ø	Ø				
2.	1209331	Take Up Reel				2	1	2	1	2	1				
3.	7405996	Certified Dec Tape 12 Bit Format **				2	1	2	1	Ø	Ø				
4.	7405996-1	Certified Dec Tape 18 Bit Format ***				2	1	Ø	Ø	Ø	Ø				
5.	A-ML-TU56-0	Print Set (When not included in control printset)				1	1	1	1	1	1				
6.	Dec-ØØ-HRTB-D	Maintenance Manual				1	1	1	1	Ø	Ø				
7.	BCØ2X-Ø3	Select Cable *				1	1	Ø	Ø	Ø	Ø				
8.	7405152-1	Head Cable *				1	1	Ø	Ø	Ø	Ø				
9.	7408321	Mounting Bracket *				1	1	1	1	1	1				
10.	7408322	Spacer Black *				2	2	2	2	2	2				
Note: For Positive Logic Interface G742 Jumper Module Replaces M531.															
***Supply with units for use on PDP1,4,6,7,9,10,11,15															
** Supply with units for use on PDP5,12,8															
* Loose Piece when shipped as add on, stand alone															
TITLE TU56 ACCESSORY LIST				ASSY. NO.		SIZE CODE A AL		NUMBER TU56-0-5			REV. F		ECO NO TU56-00051		
				SHEET 1 OF 2		DIST.									

DIGITAL EQUIPMENT CORPORATION MAYNARD, MASSACHUSETTS				LEGEND		QUANTITY / VARIATION									
MADE BY J. INGLEDUE DATE 5-31-72		CHECKED 7-7-72 DATE H. DRAB		SECTION 2		PA	PAPER TAPE ASCII								
ENG H. DRAB DATE 7-7-72		PROD DATE		ISSUED SECT. 2		PB	PAPER TAPE BINARY								
PM	PAPER TAPE READ-IN-MODE	TU56-MR	TU56-MJ	TU56-MC	TU56-MD	KIT CHECK	BY	DATE	INSTALLATION CHECK	BY	DATE				
1.	TUC-Ø1	Head Cleaning Kit				1	1	Ø	Ø						
2.	1209331	Take Up Reel				2	1	2	1						
3.	7405996	Certified Dec Tape 12 Bit Format **				2	1	Ø	Ø						
4.	7405996-1	Certified Dec Tape 18 Bit Format ***				Ø	Ø	Ø	Ø						
5.	A-ML-TU56-Ø	Print Set (When not included in Control Print Set)				1	1	1	1						
6.	DEC-00-HRTB-D	Maintenance Manual				1	1	Ø	Ø						
7.	BCØ2X-Ø3	Select Cable *				Ø	Ø	Ø	Ø						
8.	7405152-1	Head Cable *				Ø	Ø	Ø	Ø						
9.	7408321	Mounting Bracket *				Ø	Ø	Ø	Ø						
10.	7408322	Spacer Block *				Ø	Ø	Ø	Ø						
TITLE TU56 ACCESSORY LIST				ASSY. NO.		SIZE CODE A AL		NUMBER TU56-0-5			REV. F		ECO NO		
				SHEET 2 OF 2		DIST.									

THIS SCHEMATIC IS FURNISHED ONLY FOR TEST AND MAINTENANCE PURPOSES. THE CIRCUITS ARE PROPRIETARY IN NATURE AND SHOULD BE TREATED ACCORDINGLY. COPYRIGHT 1969 BY DIGITAL EQUIPMENT CORPORATION



UNLESS OTHERWISE INDICATED:  
 RESISTORS ARE 1K, 1/4W, 5%  
 DIODES ARE D664  
 CAPACITORS ARE .39MFD, 100V, 10%  
 TRANSISTORS ARE DEC6534B  
 EI IS DEC7401  
 PIN 14 ON EACH IC = +5V  
 PIN 7 ON EACH IC = GND

REVISIONS	CHK	CHG NO.	REV.
	0001	A	
	0002	B	
	0003	C	

DRN.	BUTLER	DATE	11-13-69
CHK'D		DATE	1-17-70
ENG.	E. Luff	DATE	1/24/69
PROD.		DATE	

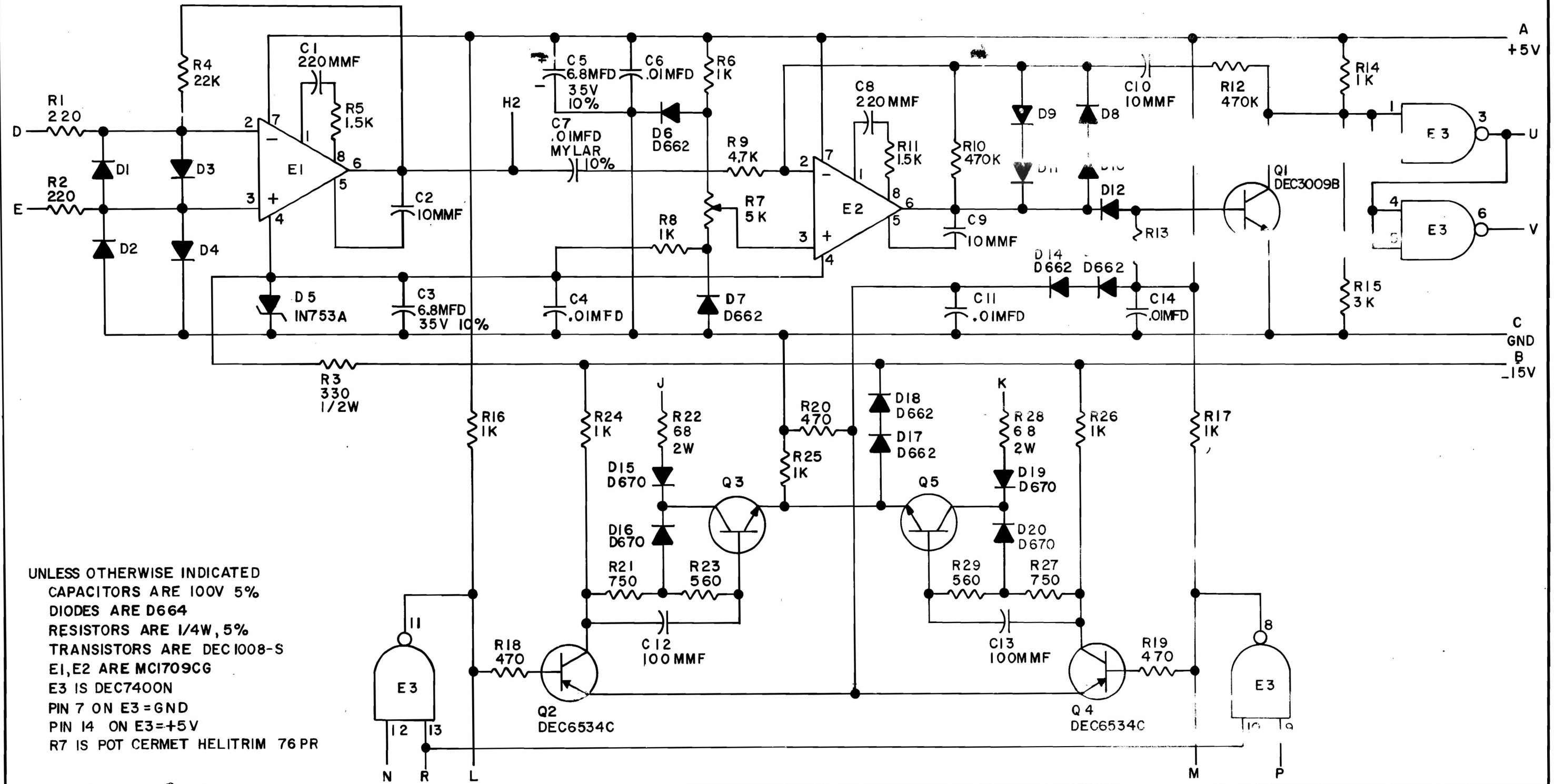
TRANSISTOR & DIODE CONVERSION CHART			
DEC	EIA	DEC	EIA
D664	IN3606		
DEC6534B	MPS6534B		
DEC6531	MPS6531		
2N4923	SAME		

**digital**  
 EQUIPMENT CORPORATION  
 MAYNARD, MASSACHUSETTS

TITLE			
CLOCK & REGULATOR G859			
SIZE	CODE	NUMBER	REV.
B	CS	G859-0-1	C
PRINTED CIRCUIT REV.			A



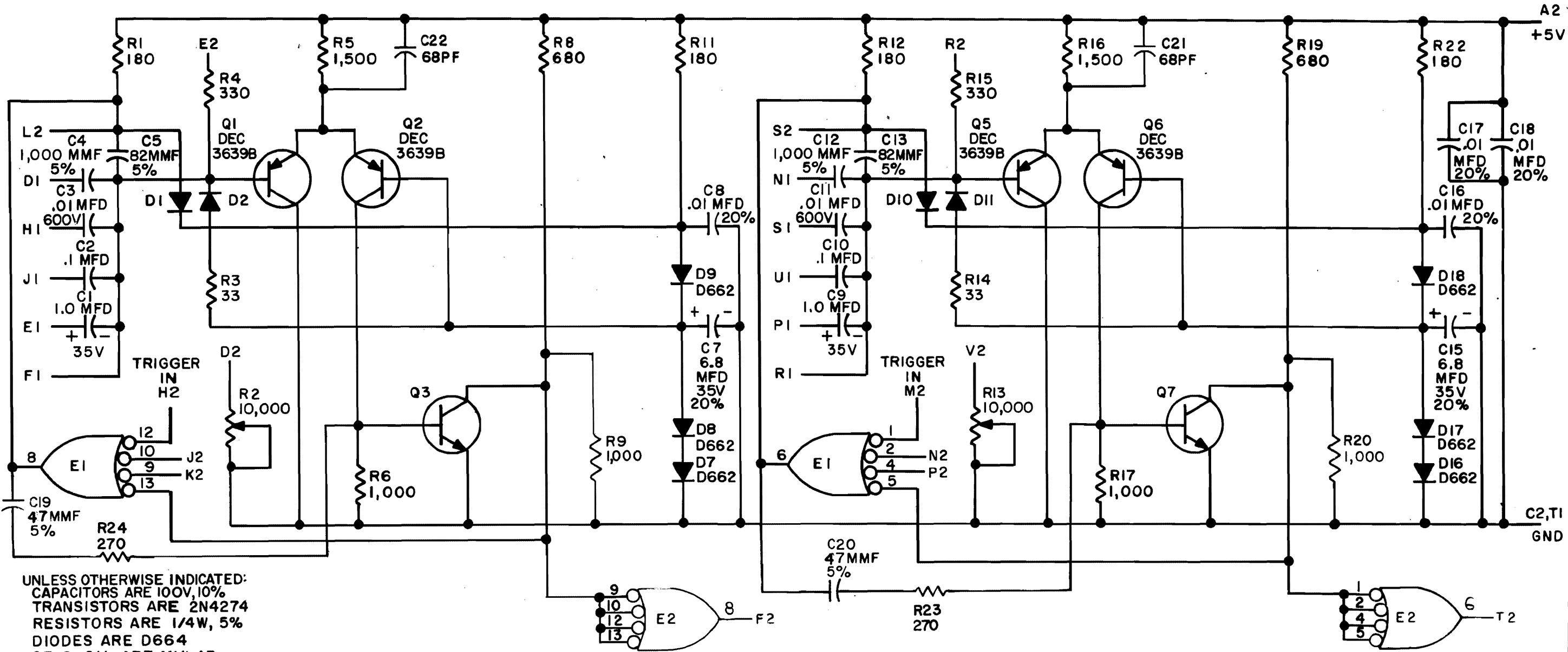
THIS SCHEMATIC IS FURNISHED ONLY FOR TEST AND MAINTENANCE PURPOSES. THE CIRCUITS ARE PROPRIETARY IN NATURE AND SHOULD BE TREATED ACCORDINGLY. COPYRIGHT 1969 BY DIGITAL EQUIPMENT CORPORATION



UNLESS OTHERWISE INDICATED  
 CAPACITORS ARE 100V 5%  
 DIODES ARE D664  
 RESISTORS ARE 1/4W, 5%  
 TRANSISTORS ARE DEC1008-S  
 E1, E2 ARE MC1709CG  
 E3 IS DEC7400N  
 PIN 7 ON E3 = GND  
 PIN 14 ON E3 = +5V  
 R7 IS POT CERMET HELITRIM 76 PR

REVISIONS CHK CHG NO. REV. A H. DRAB 5/16/72 202 B H. DRAB 6		DRN. <i>A. Clemens</i> 8-27-69 CHK'D <i>V. O. Kallala</i> 9/13/69 ENG. <i>J. G. ...</i> 9/25/69 PROD.	DATE 8-27-69 DATE 9/13/69 DATE 9/25/69 DATE	<b>TRANSISTOR &amp; DIODE CONVERSION CHART</b> <table border="1"> <tr> <th>DEC</th> <th>EIA</th> <th>DEC</th> <th>EIA</th> </tr> <tr> <td>D664</td> <td>IN3606</td> <td>DEC1008-S</td> <td>MM1008</td> </tr> <tr> <td>D662</td> <td>IN645</td> <td></td> <td></td> </tr> <tr> <td>D670</td> <td>SAME</td> <td></td> <td></td> </tr> <tr> <td>DEC3009B</td> <td>2N3009B</td> <td></td> <td></td> </tr> <tr> <td>DEC6534C</td> <td>MPS6534</td> <td></td> <td></td> </tr> </table>	DEC	EIA	DEC	EIA	D664	IN3606	DEC1008-S	MM1008	D662	IN645			D670	SAME			DEC3009B	2N3009B			DEC6534C	MPS6534			<b>digital</b> <b>EQUIPMENT CORPORATION</b> MAYNARD, MASSACHUSETTS	<b>MANCHESTER READER/WRIER G888</b> SIZE B CODE CS NUMBER G888-0-1 REV. E PRINTED CIRCUIT REV. A
DEC	EIA	DEC	EIA																											
D664	IN3606	DEC1008-S	MM1008																											
D662	IN645																													
D670	SAME																													
DEC3009B	2N3009B																													
DEC6534C	MPS6534																													

THIS SCHEMATIC IS FURNISHED ONLY FOR TEST AND MAINTENANCE PURPOSES. THE CIRCUITS ARE PROPRIETARY IN NATURE AND SHOULD BE TREATED ACCORDINGLY. COPYRIGHT 1967 BY DIGITAL EQUIPMENT CORPORATION



UNLESS OTHERWISE INDICATED:  
 CAPACITORS ARE 100V, 10%  
 TRANSISTORS ARE 2N4274  
 RESISTORS ARE 1/4W, 5%  
 DIODES ARE D664  
 C3 & C11 ARE MYLAR  
 E1 IS DEC74H40N  
 PIN 7 ONIC'S = GND  
 PIN 14 ONIC'S = +5V  
 R2 & R13 ARE HELITRIM POT #78PR  
 1.0MFD CAPACITORS ARE TANTALUM  
 E2 IS DEC7413N

PARTS LIST A-PL-M302-0-0

REVISIONS	CHK	CHG NO.	REV.	B	C	D	E	F	H	J	K	L	M
		6507											
		6719											
		6881											
		7077											
		00001											
		00002											
		00003											
		00004											
		00005											

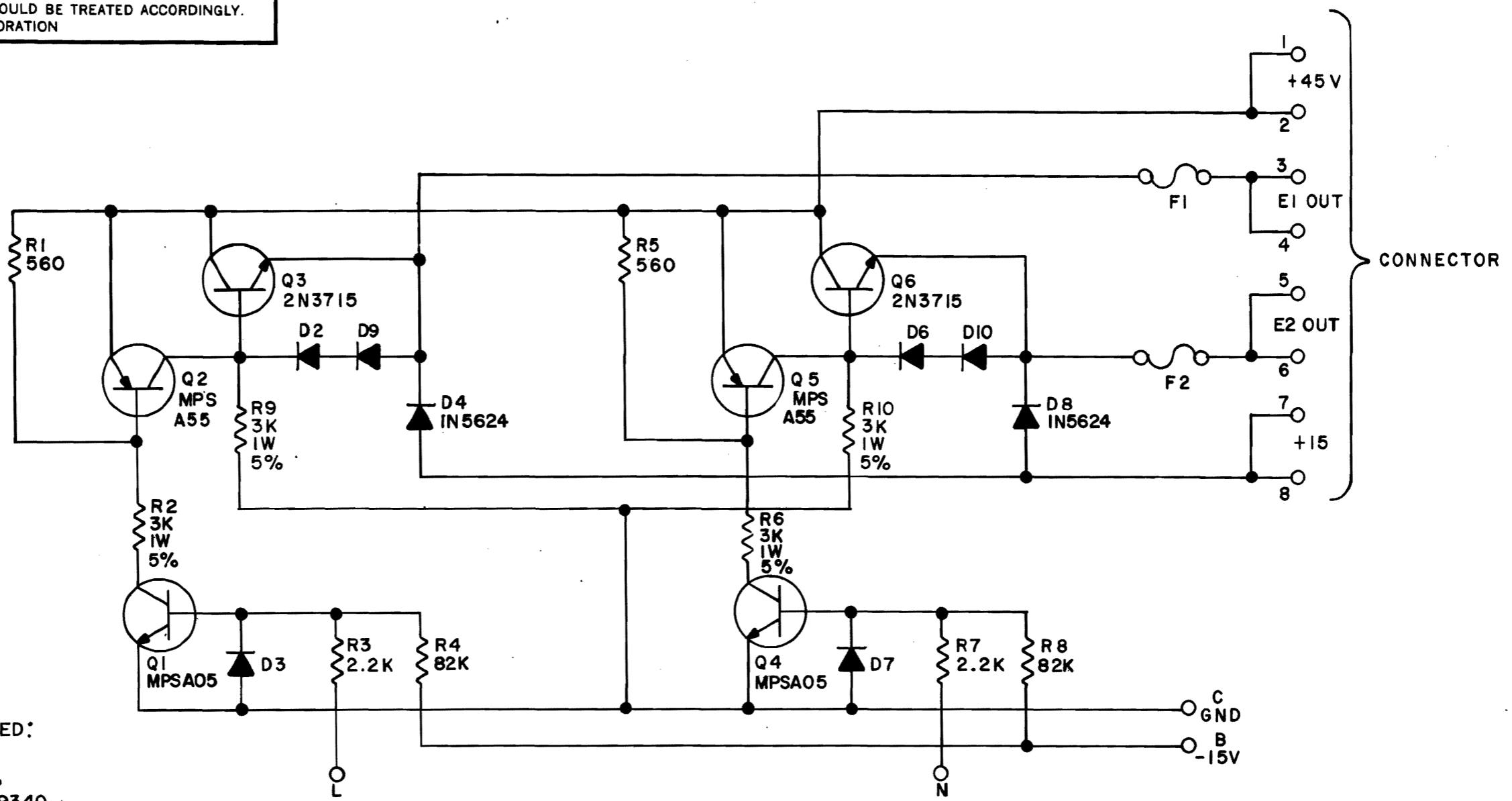
DRN. <i>M. Haller</i>	DATE 6-15-67
CHK'D <i>[Signature]</i>	DATE 6-15-67
ENG. <i>L. W. [Signature]</i>	DATE 6/21/67
PROD. 1	DATE

TRANSISTOR & DIODE CONVERSION CHART			
DEC	EIA	DEC	EIA
2N4274	SAME		
DEC3639B	2N3639		
D662	IN645		
D664	IN3606		

**digital**  
 EQUIPMENT CORPORATION  
 MAYNARD, MASSACHUSETTS

TITLE ONE SHOT DELAY M302			
SIZE B	CODE CS	NUMBER M302-0-1	REV. M
PRINTED CIRCUIT REV.			L

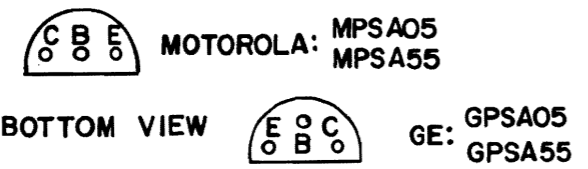
THIS SCHEMATIC IS FURNISHED ONLY FOR TEST AND MAINTENANCE PURPOSES. THE CIRCUITS ARE PROPRIETARY IN NATURE AND SHOULD BE TREATED ACCORDINGLY. COPYRIGHT 1969 BY DIGITAL EQUIPMENT CORPORATION



UNLESS OTHERWISE INDICATED:  
 DIODES ARE D672  
 RESISTORS ARE 1/4W, 10%  
 CONNECTOR IS DEC #1209340  
 CONNECTOR PINS ARE DEC #1209456  
 F1, F2 ARE 5 AMP

NOTE: Q1, Q2, Q4, Q5 HAVE VARIED PACKAGES  
 DEPENDING ON SOURCE.

SEE DIAGRAM:



REV	CHG NO.	REV.
A	00002	
B	00003	
C	00004	
D	00005	
E	00006	

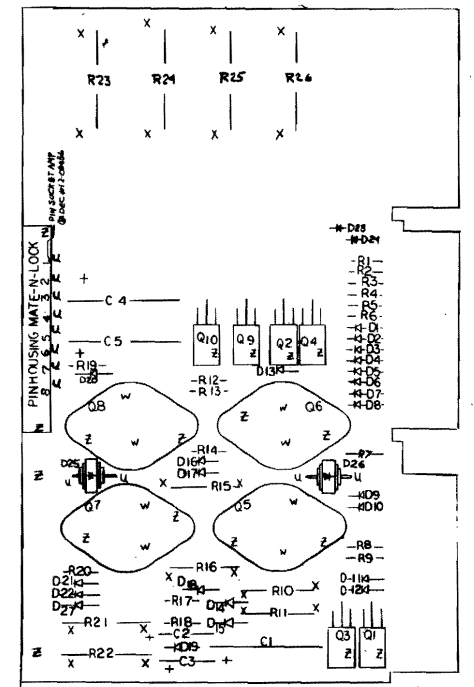
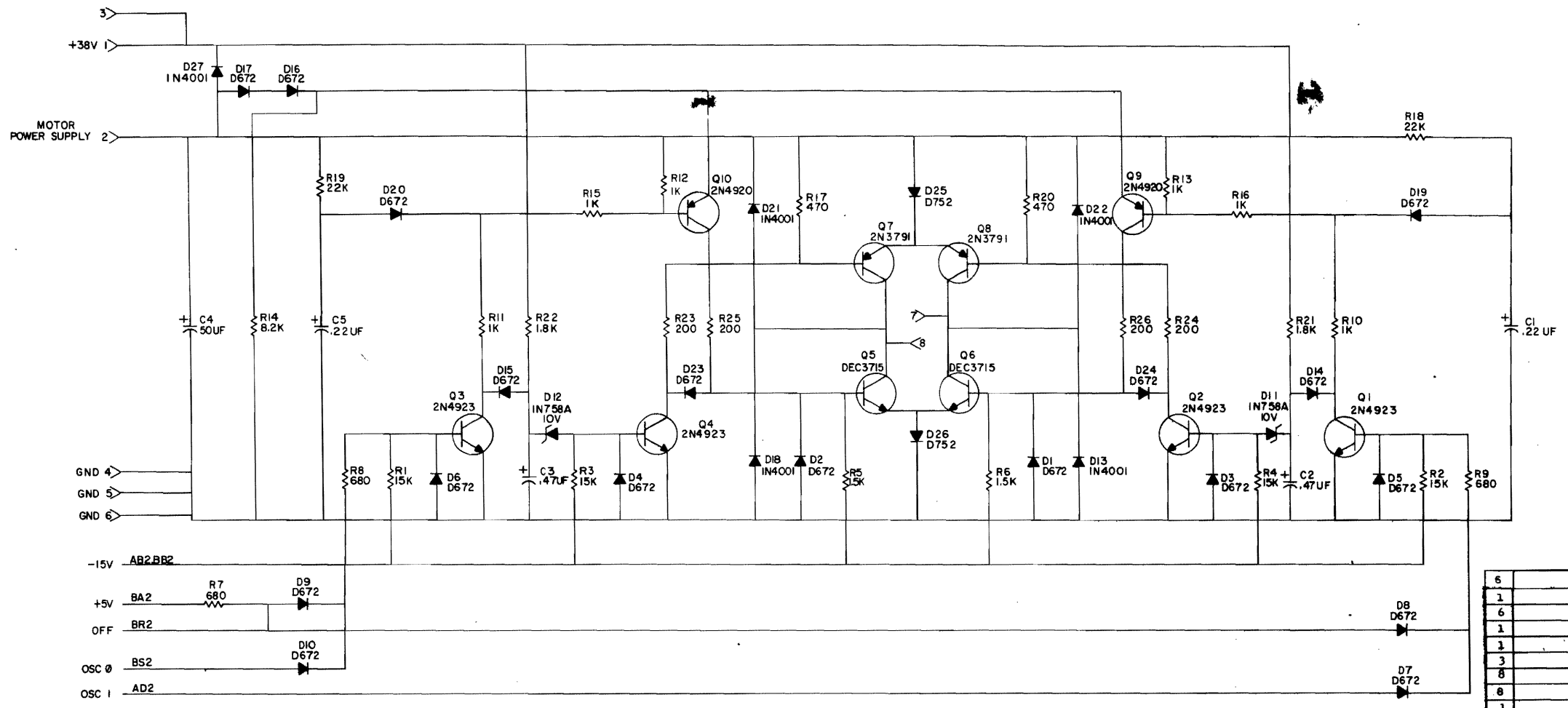
DRN. *R. Almona* DATE 9-9-69  
 CHK'D *[Signature]* DATE 9/18/69  
 ENG. *[Signature]* DATE 2-17-70  
 PROD. DATE

TRANSISTOR & DIODE CONVERSION CHART			
DEC	EIA	DEC	EIA
D672	IN3653		
MPSA05			
2N3715	NONE		
MPSA55			
IN5624	SAME		

**digital**  
 EQUIPMENT CORPORATION  
 MAYNARD, MASSACHUSETTS

TITLE DUAL MOTOR VOLTAGE CONTROL G847			
SIZE B	CODE CS	NUMBER G847-0-1	REV. D
PRINTED CIRCUIT REV. E			

THIS SCHEMATIC IS FURNISHED ONLY FOR TEST AND MAINTENANCE PURPOSES THE CIRCUITS ARE PROPRIETARY IN NATURE AND SHOULD BE TREATED ACCORDINGLY COPYRIGHT 1971 BY DIGITAL EQUIPMENT CORPORATION



QTY.	REF. DESIGNATION	DESCRIPTION	DEC PART NO.	QTY.
6		NYLON SCREW 4-40X3/8	9006401-4	36
1		FIBER SPACER 1/4 x 1/2 x #6	9007615	35
6		4-40 NYLON HEX NUT	9007992	36
1		NYLON HEX NUT #4	9007992	35
1		NYLON SCREW 4-40 x 1/2	9006402-4	32
3		HANDLE EYELET	9004732	33
8		4-40 KERNUT	9006557	30
8		4-40 x 5/16" SCREW	9006010-4	29
1		HANDLE, FLIP CHIP - GREEN	9008337-01	28
2	Q9, 10	TRANSISTOR 2N4920	1509605	27
4	Q1, 2, 4, 3	TRANSISTOR 2N4923	1509604	26
2	Q7, 8	TRANSISTOR 2N3791	1509581	25
2	Q5, 6	TRANSISTOR DEC 3715	1503068	24
2	R18, 19	RES. 22K 1/2W 5%	1301808	23
4	R23, 24, 25, 26	RES. 200 5W 5%	1309639	22
4	R1, 2, 3, 4	RES. 15K 1/2W 5%	1300496	21
1	R14	RES. 8.2K 1/2W 5%	1301179	20
2	R21, 22	RES. 1.8K 2W 10%	1300402	19
2	R5, 6	RES. 1.5K 1/2W 5%	1300391	18
4	R10, 11, 15, 16	RES. 1K 1W 5%	1300368	17
2	R12, 13	RES. 1K 1/2W 5%	1300365	16
3	R7, 8, 9	RES. .680 1/2W 5%	1301424	15
2	R17, 20	RES. 470 1/2W 5%	1300316	14
8		PIN, SOCKET	1209456	13
1		PIN HOUSING	1209340	12
2	D11, 12	DIODE ZENER IN758A 10V, 1/2W 5%	1100125	11
2	D25, 26	DIODE D752	1110615	10
18	D1- 10, 14- 17, 19, 20, 23, 24	DIODE D672	1105275	9
5	D13, 18, 21, 22, 27	DIODE 1N4001	1102942	8
2	C1, 5	CAP. 0.22UF 100V 10% NYLAR	1000037	7
2	C2, 3	CAP. 0.47UF 35V 10% S.TANT	1005965	6
1	C4	CAP. .50UF 50V -10+75% S.TANT	1000080	5
1		ETCHED CIRCUIT BOARD	5008522	4
		MODULE ECO HISTORY	B-MH-0848-0-6	3
		ETCH BOARD, MOTOR CCNT	E-1A-5008322-0-0	2
		X-Y COORDINATE HOLE LOCATION	K-00-0848-0-4	1
		DESCRIPTION	DEC PART NO.	
		PARTS LIST		

REV.	DATE	BY	CHKD.	DESCRIPTION
1	2-2-69	A. RITCEY		TRANSISTOR & DIODE CONVERSION CHART
2	2-4-69	R. TREMBLAY		
3	4-3-70	E. LUTTIG		

REV.	DATE	BY	CHKD.	DESCRIPTION
1	2-2-69	A. RITCEY		TRANSISTOR & DIODE CONVERSION CHART
2	2-4-69	R. TREMBLAY		
3	4-3-70	E. LUTTIG		

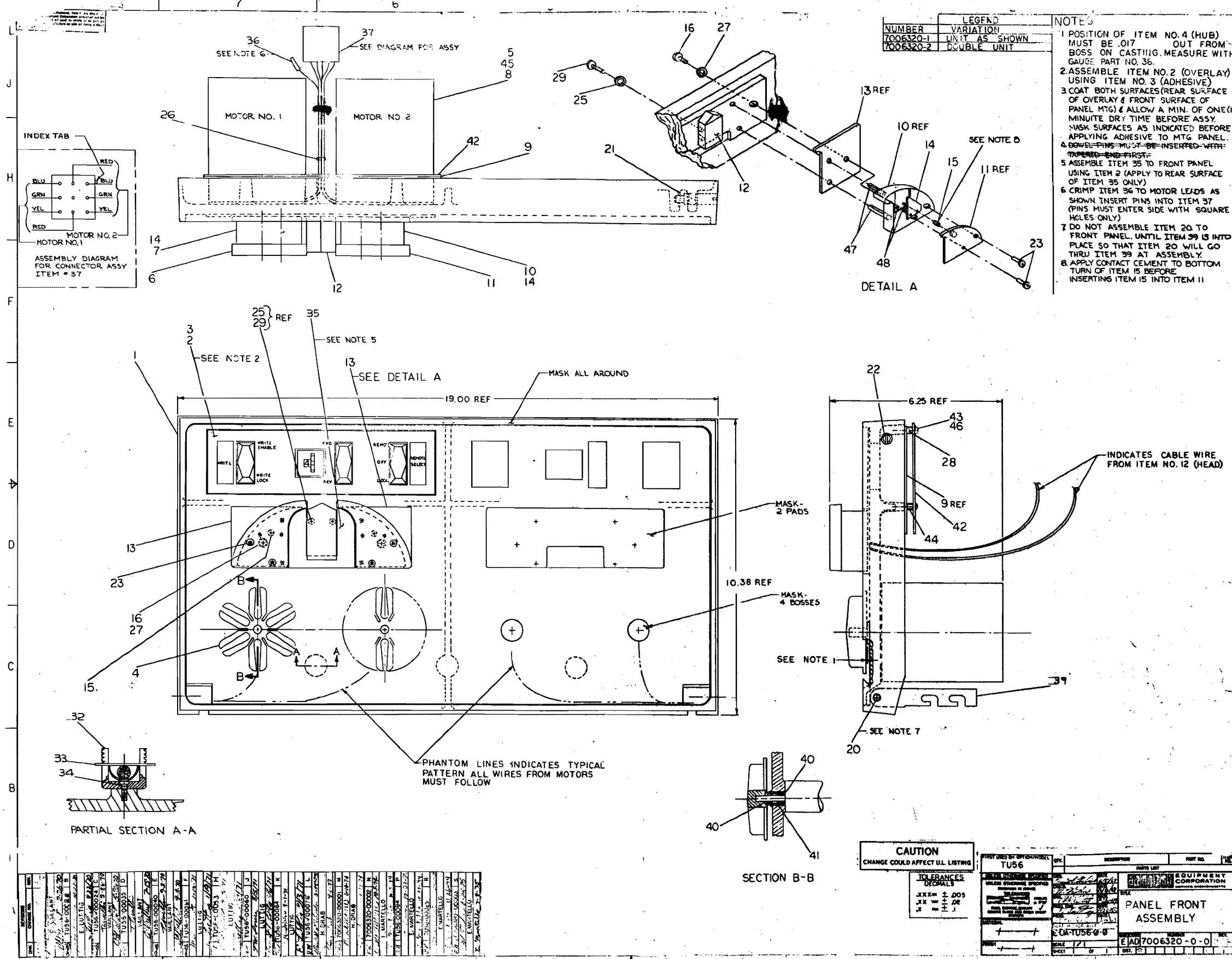
REV.	DATE	BY	CHKD.	DESCRIPTION
1	2-2-69	A. RITCEY		TRANSISTOR & DIODE CONVERSION CHART
2	2-4-69	R. TREMBLAY		
3	4-3-70	E. LUTTIG		

REV.	DATE	BY	CHKD.	DESCRIPTION
1	2-2-69	A. RITCEY		TRANSISTOR & DIODE CONVERSION CHART
2	2-4-69	R. TREMBLAY		
3	4-3-70	E. LUTTIG		

REV.	DATE	BY	CHKD.	DESCRIPTION
1	2-2-69	A. RITCEY		TRANSISTOR & DIODE CONVERSION CHART
2	2-4-69	R. TREMBLAY		
3	4-3-70	E. LUTTIG		







QTY	DESCRIPTION	REF	UNIT
1	PLATE	1	PCB
1	PLATE	2	PCB
1	PLATE	3	PCB
1	PLATE	4	PCB
1	PLATE	5	PCB
1	PLATE	6	PCB
1	PLATE	7	PCB
1	PLATE	8	PCB
1	PLATE	9	PCB
1	PLATE	10	PCB
1	PLATE	11	PCB
1	PLATE	12	PCB
1	PLATE	13	PCB
1	PLATE	14	PCB
1	PLATE	15	PCB
1	PLATE	16	PCB
1	PLATE	17	PCB
1	PLATE	18	PCB
1	PLATE	19	PCB
1	PLATE	20	PCB
1	PLATE	21	PCB
1	PLATE	22	PCB
1	PLATE	23	PCB
1	PLATE	24	PCB
1	PLATE	25	PCB
1	PLATE	26	PCB
1	PLATE	27	PCB
1	PLATE	28	PCB
1	PLATE	29	PCB
1	PLATE	30	PCB
1	PLATE	31	PCB
1	PLATE	32	PCB
1	PLATE	33	PCB
1	PLATE	34	PCB
1	PLATE	35	PCB
1	PLATE	36	PCB
1	PLATE	37	PCB
1	PLATE	38	PCB
1	PLATE	39	PCB
1	PLATE	40	PCB
1	PLATE	41	PCB
1	PLATE	42	PCB
1	PLATE	43	PCB
1	PLATE	44	PCB
1	PLATE	45	PCB
1	PLATE	46	PCB
1	PLATE	47	PCB
1	PLATE	48	PCB
1	PLATE	49	PCB
1	PLATE	50	PCB

DIGITAL EQUIPMENT CORPORATION MAYNARD, MASSACHUSETTS <b>PARTS LIST</b>				QUANTITY/VARIATION																			
MADE BY KEN GULICK		CHECKED D. HEALY		SECTION		7006320-1	7006320-2																
DATE 6/5/69		DATE 7/23/69		1																			
ENG <i>Challant</i>		PROD <i>C.R. Thompson</i>		ISSUED SECT.																			
DATE 8-26-69		DATE 8/26/69		1																			
ITEM NO.	DWG NO. / PART NO.	DESCRIPTION																					
1	E-MD-7407395-0-0	PANEL MTG (TU56)				1	1																
2	D-IA-7410968-0-0	PANEL OVERLAY				1	1																
3	9009074	ADHESIVE SCOTCH GRIP SPRAY #77				A	RA	R															
4	C-IA-7407390-0-0	HUB ASSY (6 PT CONTACT)				2	4																
5	9006341-08	SCR SOC HD CAP 10 24 X 1/2 BLK PASS.				8	16																
6	C-MD-7407282-2-0	COVER PLATE (L.H.)				1	2																
7	C-IA-7407283-2-0	TAPE GUIDE (L.H.)				1	2																
8	1209602	MOTOR, TORQUE				2	4																
9	D-IA-7006222-0-0	SWITCH CONTROL PANEL ASS'Y				1	2																
10	C-IA-7407283-1-0	TAPE GUIDE (R.H.)				1	2																
11	C-MD-7407282-1-0	COVER PLATE (R.H.)				1	2																
12	1209691	HEAD ASSY				1	2																
13	C-MD-7405136-0-0	REAR CHECK TAPE GUIDE				2	4																
14	B-MD-7405114-0-0	WEAR PLATE				2	4																
15	1211821	SPR #711-22-X INST SPEC. CO.				2	4																
16	9007639-08	SCR SOC HD CAP #10-32 X 3/8 SST				2	4																
17	<del>9008132</del>	<del>DOWEL PIN 3/32 DIA X 7/16 LG</del>				<del>4</del>	<del>8</del>																
18	<del>9008131</del>	<del>DOWEL PIN 1/8 DIA X 7/8 LG</del>				<del>4</del>	<del>8</del>																
19	<del>B-MD-7405114-2-0</del>	<del>WEAR PLATE (L.H.)</del>				<del>1</del>	<del>2</del>																
20	9008130	DOWEL PIN 1/4 DIA X 1 1/4				2	2																
21	90-07785	GRIP, EXT SER #5555-37 WALDES 3/8" SHAFT				2	2																
22	B-MD-7407400-0-0	PIN, LOCK				2	2																
TITLE PANEL FRONT, ASSEMBLY				ASSY NO. E-AD-7006320-0-0		SIZE CODE A PL		NUMBER 7006320-0-0				REV. S		ECO NO. 7006320 00003									
				SHEET 1 OF 3		DIST. C																	

DIGITAL EQUIPMENT CORPORATION MAYNARD, MASSACHUSETTS <b>PARTS LIST</b>				QUANTITY/VARIATION																			
MADE BY KEN GULICK		CHECKED D. HEALY		SECTION		7006320-1	7006320-2																
DATE 6/5/69		DATE 7/25/69		1																			
ENG <i>Challant</i>		PROD <i>C.R. Thompson</i>		ISSUED SECT.																			
DATE 8-26-69		DATE 8/26/69		1																			
ITEM NO.	DWG NO. / PART NO.	DESCRIPTION																					
23	9007882-08	SCR SOC HD CAP 6-32 X 5/8 LG BLK PASS.				4	8																
24	<del>C-MD-7405136-1-0</del>	<del>REAR CHECK TAPE GUIDE L.H.</del>				<del>2</del>	<del>4</del>																
25	9006632	WASH INT TOOTH #4				2	4																
26	9007031	TIE WRAP #SST-2-B PANDUIT				A	RA	R															
27	9007651	WASH EXT TOOTH #10 HOLE				2	4																
28	9006021-01	SCR, PH HD PAN #6-32 X 3/8 SST				4	8																
29	9006014-1	SCR PH HD PAN #4-40 X 5/8 LG SST				2	4																
30	<del>9008136</del>	<del>GRIP RING EXT SERIES G 5555-9S</del>				<del>4</del>	<del>8</del>																
31	<del>9006311</del>	<del>SCR SOC SET SCR #10-32 X 1/4 SST</del>				<del>4</del>	<del>8</del>																
32	90 07772-9	CLAMP, CABLE BASE				1	2																
33	<del>90 07772-10</del>	<del>CLAMP, CABLE TOP</del>				<del>1</del>	<del>2</del>																
34	90 06039-2	SCREW FLAT HEAD #8-32 x 3/8 Lg SST				1	2																
35	C-IA - 7408008-0-0	FILLER PLATE				1	2																
36	1209378	PIN, CONNECTOR				6	12																
37	1209351-09	HOUSING, CONNECTOR				1	2																
38	D-IA-7408010-0-0	GAUGE, HUB				A	RA	R															
39	1209830	ARM, PANEL SUPPORT				2	2																
40	1209926	BUSHING, OIL IMPREGNATED BRONZE				4	8																
41	1209917	SPRING, COMPRESSION				2	4																
42	C-MD-7408287-0-0	GUARD PLATE				1	2																
43	90-06025-1	SCR, PH HD PAN #6-32 x 1/2 SST				2	4																
44	90-06796	SPACER 3/16AF X 3/16LG #6 HOLE AL				2	4																
TITLE PANEL FRONT ASSEMBLY				ASSY NO. E-AD-7006320-0-0		SIZE CODE A PL		NUMBER 7006320-0-0				REV. S		ECO NO.									
				SHEET 2 OF 3		DIST. G																	



