

# MASTER DRAWING LIST

DWG. NO.	REV. LET.	NO. OF SHEETS	TITLE
E-UA-TC11-A-0	A	2	DEC TAPE CONTROL
A-PL-TC11-A-0	A	3	DEC TAPE CONTROL
D-DI-TC11-0-32	E	2	DRAWING INDEX LIST (TC11)
D-AD-7007048-0-0	B	1	WIRED ASSY
A-PL-TC11-G-0		1	DEC TAPE ASSY
A-PL-7007048-0-0	B	1	WIRED ASSY
E-UA-TC11-G-0		2	DEC TAPE ASSY
D-MU-TC11-0-01	F	2	MODULE UTILIZATION
A-PL-TC11-0-01	F	2	MODULE UTILIZATION
A-WI-7007048-0	*	1	REVISION STATUS
D-BS-TC11-0-02	D	1	DECTAPE CONTROL CONTROL
D-BS-TC11-0-03	C	1	DECTAPE CONTROL ERRORS
D-BS-TC11-0-04	C	1	DECTAPE CONT TP, UPS, MOTION CONT
D-BS-TC11-0-05	A	1	DECTAPE CONTROL
D-BS-TC11-0-06	A	1	RWE AND LPE
D-BS-TC11-0-07	B	1	MARK TRACK DECODER
D-BS-TC11-0-08	C	1	NPR CONTROL
D-BS-TC11-0-09		1	REGISTER CONTROL
D-BS-TC11-0-10	B	1	SLAVE RESP AND MAINT BITS
D-BS-TC11-0-11	A	1	COMMAND REGISTER
D-BS-TC11-0-12	C	1	TU56 CONNECTIONS
D-BS-TC11-0-13		1	UNIBUS DRIVER AND RECEIVERS
D-BS-TC11-0-14		1	DATA REGISTER 1
D-BS-TC11-0-15		1	DATA REGISTER 2
D-BS-TC11-0-16		1	DATA REGISTER 3
D-BS-TC11-0-17	A	1	OUTPUT GATING 1
D-BS-TC11-0-18		1	OUTPUT GATING 2
D-BS-TC11-0-19	C	1	ADDR SEL AND INT CONT
D-IC-TC11-0-20		1	BUS CONNECTORS
D-BS-TC11-0-21	A	1	BUS ADDRESS REGISTER (TCEA)
D-BS-TC11-0-22	A	1	WORD COUNT REGISTER (TCWC)
D-BS-TC11-0-23		1	TC11 CONTROL PANEL
D-TD-TC11-0-24		1	DECTAPE TIMING
D-TD-TC11-0-25		1	TC11 SLAVE RESPONSE
D-TD-TC11-0-26		1	READY AND ERROR SEQUENCE

REVISIONS				DRN.	DATE	digital EQUIPMENT CORPORATION MAYNARD, MASSACHUSETTS
REV.	DATE	CHG. NO.	APP'D.	MACKENZIE	10/24/70	
A	1/5/71	00002	P.J.	CHK'D.	DATE	TITLE DECTAPE CONTROL
B	1/71	00003	P.J.	MACKENZIE	10/29/70	
C	2/71	00004	P.J.	ENG.	DATE	
D	5/71	00006	P.J.	PROJ. ENG.	DATE	
E	9/71	00007	A.V.	PROD.	DATE	
F	11/71	00009	P.J.	FIRST USED ON		
H	11/71	00008	P.J.	PDP-11	SIZE CODE NUMBER REV.	
J	4/72	00010	P.J.	A ML TC11-0 U		
K	5/72	00011	P.J.	SCALE		
L	5/72	00012	P.J.	SHEET 1 OF 3		
M	8/72	00013	P.J.	DIST.		
N	12/72	00014	P.J.			
P	4/73	00015	P.J.			

# MASTER DRAWING LIST

DWG. NO.	REV. LET.	NO. OF SHEETS	TITLE
D-TD-TC11-0-27		1	NPR TRANSFER DATI
D-TD-TC11-0-28		1	NPR TRANSFER DATO
<del>D-AD-TC11-0-29</del>	<del>A</del>	<del>2</del>	<del>DEC TAPE ASSY (TC11)</del>
K-WL-TC11-0-30 *	J	1	WIRE LIST
A-SP-TC11-0-33		20	ENGINEERING SPECIFICATION
A-SP-TC11-0-34	REF	4	TC11 TEST PROCEDURE
A-SP-TC11-0-35	REF	3	TC11/TU56 IN HOUSE ACCEPTANCE TEST
A-AL-TC11-0-36	A	1	TC11 ACCESSARY LIST
A-SL-TC11-0-37		1	TC11 SOFTWARE LIST
			PRINT THE COMPLETE WIRELIST

REVISIONS				DRN.	DATE	digital EQUIPMENT CORPORATION MAYNARD, MASSACHUSETTS
REV.	DATE	CHG. NO.	APP'D.	MACKENZIE	10/29/70	
R	8/73	00016	J.C.	CHK'D.	DATE	TITLE DECTAPE CONTROL
S	11/74	00017	J.C.	MACKENZIE	10/29/70	
T	5/75	00018	J.C.	ENG.	DATE	
U	5/75	00019	J.C.	PROJ. ENG.	DATE	
				PROD.	DATE	
				FIRST USED ON		
				PDP-11	SIZE CODE NUMBER REV.	
				A ML TC11-0 U		
				SCALE		
				SHEET 2 OF 3		

This drawing and specifications, herein, are the property of Digital Equipment Corporation and shall not be reproduced or copied or used in whole or in part as the basis for the manufacture or sale of items without written permission.

This drawing and specifications, herein, are the property of Digital Equipment Corporation and shall not be reproduced or copied or used in whole or in part as the basis for the manufacture or sale of items without written permission.



DIGITAL EQUIPMENT CORPORATION MAYNARD, MASSACHUSETTS <b>PARTS LIST</b>					QUANTITY / VARIATION														
MADE BY V. SOUZA		CHECKED <i>John Barber</i> 11/18/74		SECTION	TC11-AA (120V)	TC11-AB (240V)	TC11-AC (120V)	TC11-AD (240V)											
DATE 10/8/74	DATE	PROD R. MAGNER	ISSUED SECT.																
ENG DATE <i>John Barber</i> 11/18/74	DATE 11-22-74																		
ITEM NO.	DWG NO. / PART NO.	DESCRIPTION																	
1	C-PL-7006501-23-0	CABINET ASSY																	
2	C-PL-7006501-29-0	CABINET ASSY																	
3	D-AD-7007155-0-0	LOGIC ASSY (TC11)																	
4	D-IA-7007109-Q-0	HARNESS, POWER																	
5	E-UA-861-C-0	POWER CONTROL, 861-C (120V)																	
6	E-UA-861-B-0	POWER CONTROL, 861-B (240V)																	
7	D-UA-H720-K-0	POWER SUPPLY (H720-E RACK MTG.) (120V)																	
8	D-UA-H720-L-0	POWER SUPPLY (H720-F RACK MTG.) (240V)																	
9	D-UA-H950-QB-0	COVER PANEL (10.5 IN)																	
10	C-MD-7404721-0-0	COVER, TERMINAL STRIP																	
11	C-MD-7407607-0-0	PLATE, TERMINAL STRIP MOUNTING																	
12	D-MU-TC11-0-1	MODULE UTILIZATION																	
13	C-SC-1209856-0-1	MODULE HOLDER																	
14	D-MU-1945-19-1	HOLD DOWN BAR																	
15	C-IA-7008288-8F	CABLE ASSY, POWER CONTROL																	
16	B-IA-7007006-01	JUMPER, POWER CONTROL																	
17	B-IA-7007006-02	JUMPER, POWER CONTROL																	
18	D-UA-BC11A-8F-0	CABLE, UNIBUS																	
19	D-UA-BC11A-10-0	CABLE, UNIBUS																	
20	9008887	GROUND STRAP, 740F-34-44																	
<del>21</del>	<del>9006073-2</del>	<del>SCR, PHL FLAT HD #10-32 X .50</del>																	
22	9006073-3	SCR, PHL TRUSS HD #10-32 X .50																	
TITLE DECTAPE CONTROL (TC11)					ASSY NO. E-UA-TC11-A-0	SIZE A	CODE PL	NUMBER TC11-A-0										REV. A	ECO NO. TC11-00019
					SHEET 1 OF 3	DIST.													

DEC FORM DEC 16-(325)-1031-N870  
DRA 110

DIGITAL EQUIPMENT CORPORATION MAYNARD, MASSACHUSETTS <b>PARTS LIST</b>					QUANTITY / VARIATION															
MADE BY V. SOUZA		CHECKED		SECTION	TC11-AA (120V)	TC11-AB (240V)	TC11-AC (120V)	TC11-AD (240V)												
DATE 10/8/74	DATE	PROD	ISSUED SECT.																	
ENG DATE	DATE																			
ITEM NO.	DWG NO. / PART NO.	DESCRIPTION																		
23	9007786	NUT, TINNERMAN #10-32																		
24	9007651	LOCKWASHER, EXT TOOTH #10																		
25	9007243	TUBING, .25 BLACK																		
26	9006902	TERM STRIP, #4-541 CINCH JONES																		
27	9006857	SPACER, .25 AF X .62 LG #6-32																		
28	9009002	JUMPER, CINCH 141-J																		
<del>29</del>	<del>9007029</del>	<del>CONN, SOLDERLESS (RED) #6 HOLE #18-22AWG</del>																		
30	9006022-1	SCR, PHL PAN HD #6-32 X .38																		
31	9006026-1	SCR, PHL PAN HD #6-32 X .75 LG																		
32	9006565	NUT, KEPS #10-32																		
33	9006633	LOCKWASHER, INT TOOTH #6																		
34	9006568	NUT, KEPS 5/16-18																		
35	9007880	CABLE TIE, NYLON																		
36	9008264	MOUNT, CABLE TIE, ADHESIVE BACK																		
37	9007867	MOUNT, CABLE TIE, PUSH-ON																		
38	9007969	CONN, SOLDERLESS (BLU), PUSH-ON, #14-16AWG																		
39	9007970	CONN, SOLDERLESS (RED), PUSH-ON, #18-22AWG																		
40	9008185	NUT, KEPS #6-32																		
41	1209224	LATCH MOLDING, THIN																		
42	1211386	SPACER ASSY, THICK LATCH																		
43	1204826	FAN, CABINET ASSY																		
44	1209175	FINGER GUARD, FAN ASSY																		
TITLE DECTAPE CONTROL (TC11)					ASSY NO. E-UA-TC11-A-0	SIZE A	CODE PL	NUMBER TC11-A-0										REV. A	ECO NO. A	
					SHEET 2 OF 3	DIST.														

DEC FORM DEC 16-(325)-1031-N870  
DRA 110

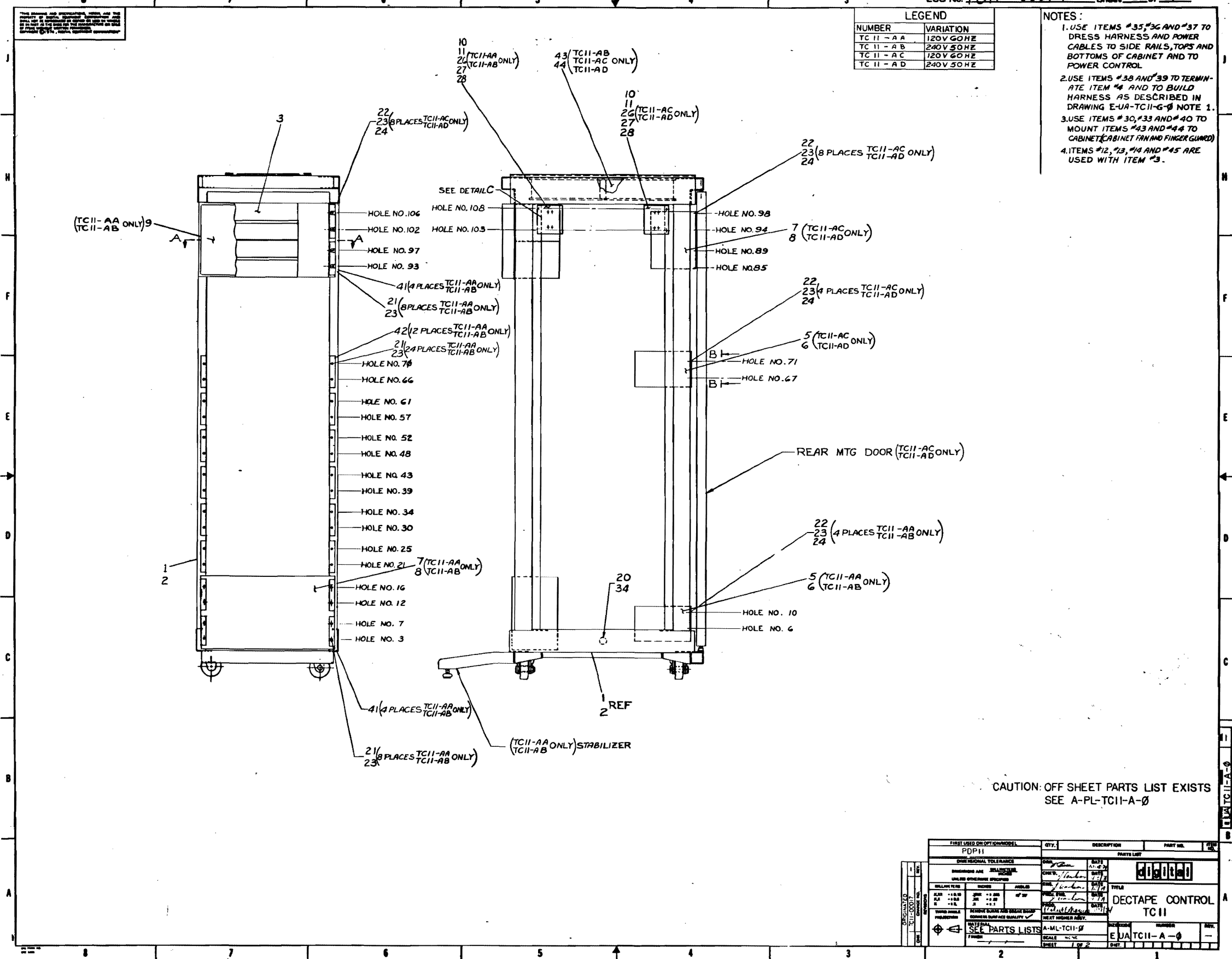
ECO No TC11-00019 Sheet 4 of 7



THIS DRAWING AND PREVIOUS DRAWINGS ARE THE PROPERTY OF THE COMPANY. IT IS TO BE KEPT IN CONFIDENCE AND NOT TO BE REPRODUCED OR TRANSMITTED IN ANY FORM OR BY ANY MEANS, ELECTRONIC OR MECHANICAL, INCLUDING PHOTOCOPYING, RECORDING, OR BY ANY INFORMATION STORAGE AND RETRIEVAL SYSTEM.

LEGEND	
NUMBER	VARIATION
TC 11 - A A	120V 60HZ
TC 11 - A B	240V 50HZ
TC 11 - A C	120V 60HZ
TC 11 - A D	240V 50HZ

- NOTES:
- USE ITEMS #35, #36 AND #37 TO DRESS HARNESS AND POWER CABLES TO SIDE RAILS, TOPS AND BOTTOMS OF CABINET AND TO POWER CONTROL.
  - USE ITEMS #38 AND #39 TO TERMINATE ITEM #4 AND TO BUILD HARNESS AS DESCRIBED IN DRAWING E-UA-TC11-G-Ø NOTE 1.
  - USE ITEMS #30, #33 AND #40 TO MOUNT ITEMS #43 AND #44 TO CABINET (CABINET FIN AND FINGER GUARD).
  - ITEMS #12, #13, #14 AND #45 ARE USED WITH ITEM #3.



CAUTION: OFF SHEET PARTS LIST EXISTS SEE A-PL-TC11-A-Ø

FIRST USED OR OPTION MODEL		QTY.	DESCRIPTION	PART NO.	REV.
PDP11					
DIMENSIONAL TOLERANCES		PARTS LIST			
UNLESS OTHERWISE SPECIFIED		DATE: 11/11/67			
DRAWN BY: [Signature]		CHECKED BY: [Signature]			
DESIGNED BY: [Signature]		TITLE: DECTAPE CONTROL TC11			
MATERIALS: [List]		SCALE: 1/2" = 1'-0"			
FINISH: [List]		SHEET: 1 OF 2			
SEE PARTS LIST		DRAWING NUMBER: E-UA-TC11-A-Ø			

