

digital

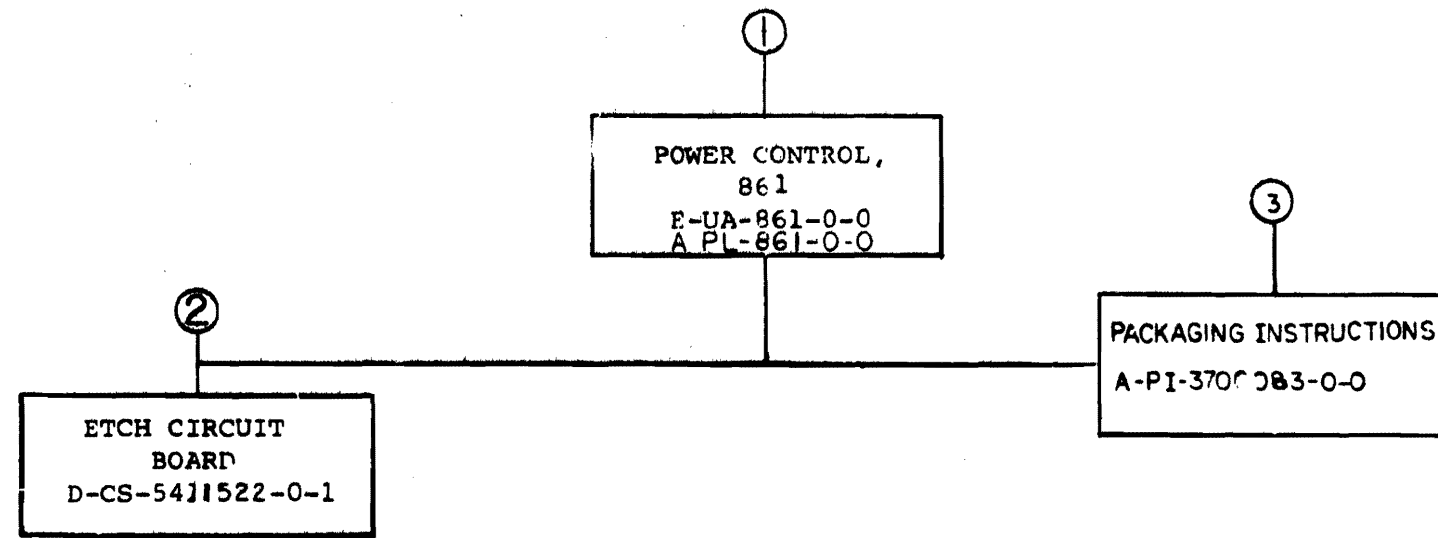
861

Engineering Drawings

Digital Equipment Corporation

The material herein is for information purposes only and is subject to change without notice. Digital Equipment Corporation assumes no responsibility for any errors which may appear herein.

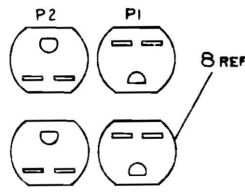
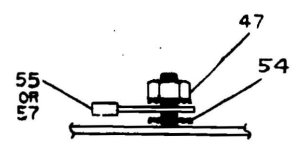
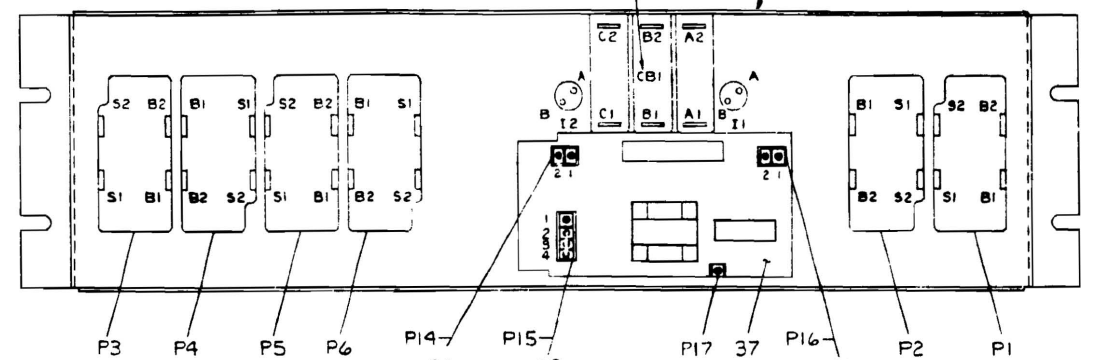
These drawings and specifications herein are the property of Digital Equipment Corporation and shall not be reproduced or copied or used in whole or in part as the basis for the manufacture or sale of items without written permission.
Copyright © 1975, Digital Equipment Corporation



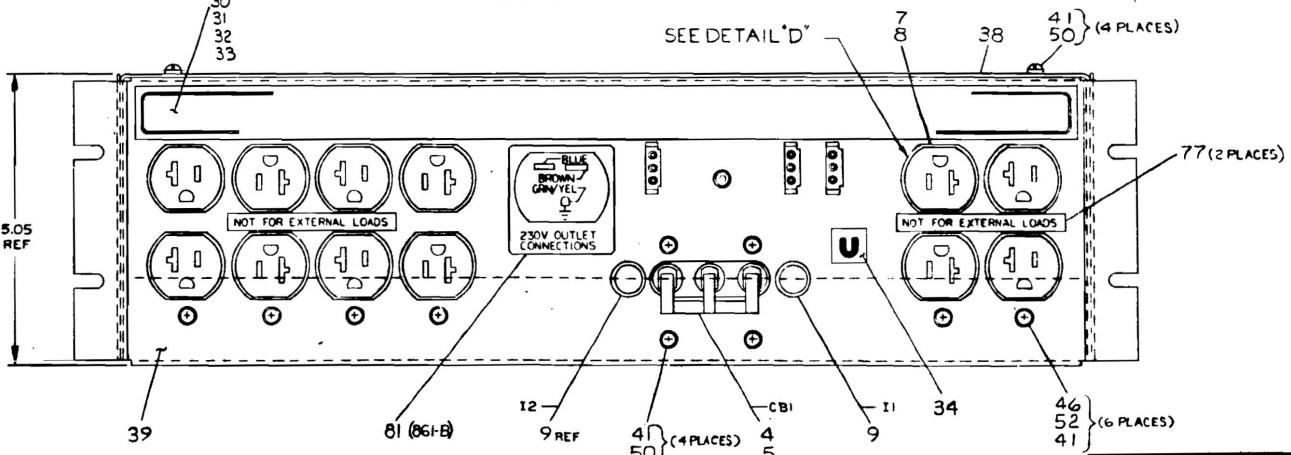
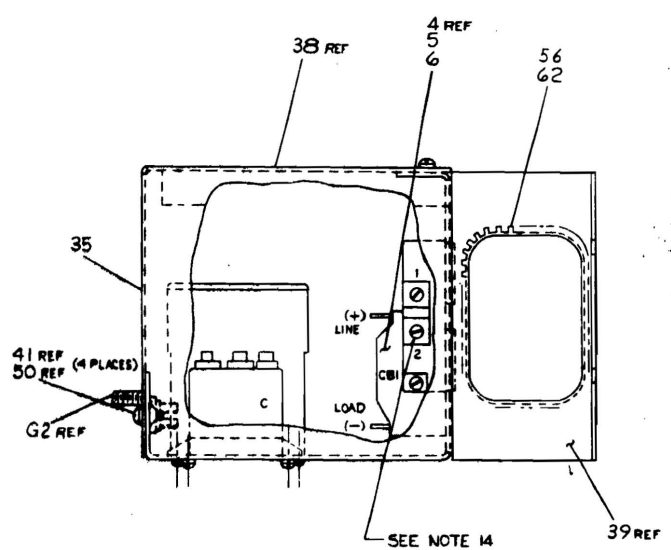
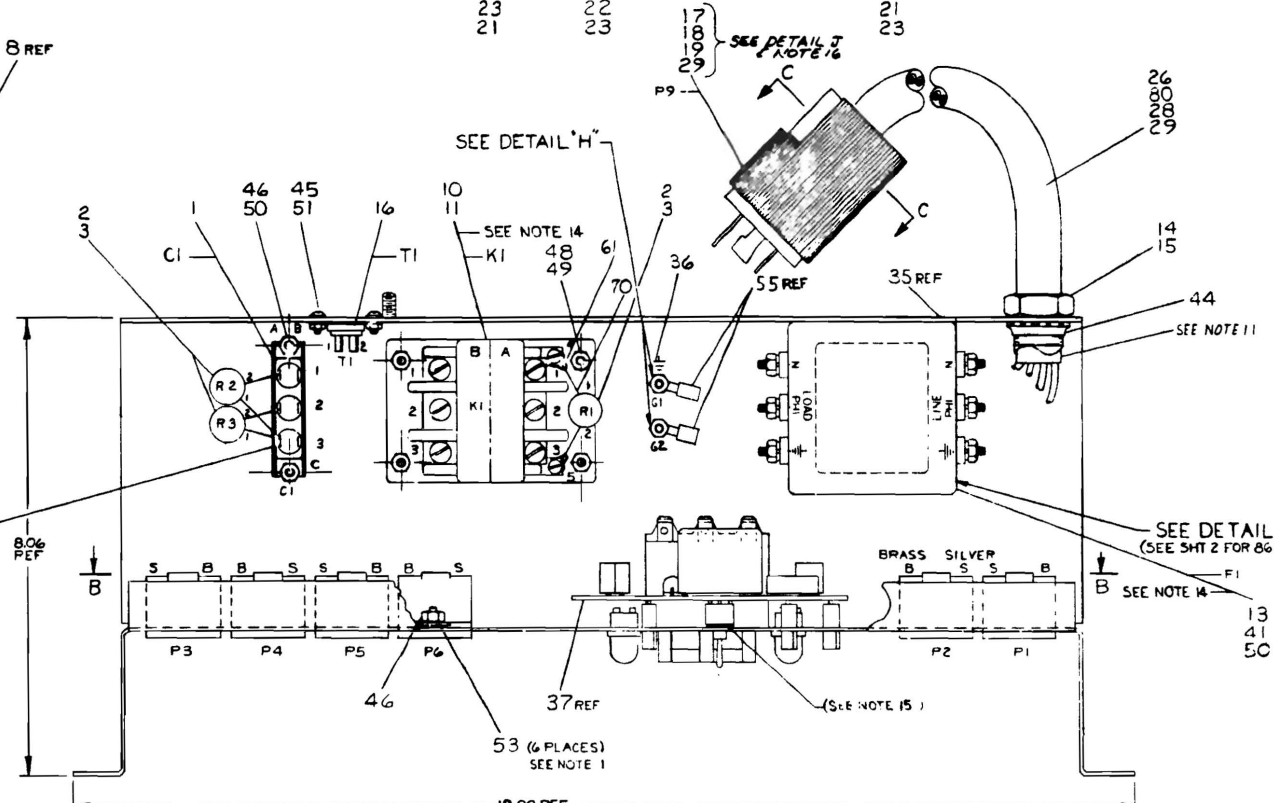
TITLE	SHEET 2 OF 3	SIZE CODE	NUMBER	REV
POWER CONTROL		B DD	861-0	M

DWG. NO.	VARIATION		
	VAC OUT	PHASES	AMP OUT
861-A	120	2	32
861-B	240	1	16
861-C	120	1	24
861-F	120	1	12

VIEW B-B



DETAIL 'D'
RECEPTALS FOR
VAR. 861-B ONLY



- NOTES:
- ITEM 53 1/2" EXT WASHER MUST BE BETWEEN CHASSIS AND MOUNTING TAB OF RECEPTACLE (P1-P6).
 - REMOVE MOUNTING TABS FOR OUTLET RECEPTACLE (ITEM 43) CONNECTIONS. (ITEMS 43, 44, 45, 46, 47, 48, 49, 50, 51, 52, 53, 54, 55, 56, 57, 58, 59, 60, 61, 62, 63, 64, 65, 66, 67, 68, 69, 70, 71, 72, 73, 74, 75, 76, 77, 78, 79, 80, 81, 82, 83, 84, 85, 86, 87, 88, 89, 90, 91, 92, 93, 94, 95, 96, 97, 98, 99, 100)
 - REMOVE PAINT MASK FROM AROUND STUD (S1) AND AROUND STUD (S2) SURFACE WITH CONDUCTIVE BRUSH (ITEM 30) PLACE EXTERNAL POWER WIRE (ITEM 61) ON STUD ENDS. THEN GRIND (FROM TOP) WITH 60 GRIT SAND PAPER (ITEM 31) TO REMOVE PAINT FROM STUD ENDS. THEN WASH (ITEM 32) AND DRY (ITEM 33) WITH CLEAN DRY AIR (ITEM 34).
 - REMOVE ALL PAINT FROM STUD ENDS (ITEMS 32, 33).
 - ALWAYS TIGHTEN SCREWS USING TORQUE LEVELS (ITEMS 12, 13).
 - C1-3 IS THE COMMON (C) SIDE OF C1.
 - RECOMMENDED TORQUE LEVELS FOR WIRE WRENCHES ARE:

1/8"	10 INCH LBS
3/16"	15 INCH LBS
1/4"	20 INCH LBS
5/16"	25 INCH LBS
3/8"	35 INCH LBS
1/2"	50 INCH LBS
 - TO PREVENT STRESS FROM CANTON ON P-BOARD USE ITEM 40 (FIBER WASHERS) BETWEEN CHASSIS AND P-BOARD.
 - USE TIE WRAPS (ITEM 43) A/R.
 - REMOVE PAINT MASK FROM AROUND STUD (S1) AND AROUND STUD (S2) SURFACE WITH CONDUCTIVE BRUSH (ITEM 30).
 - POWER CORD TO EXTEND APPROX. 30 IN. BEYOND LOCKNUT (ITEM 44) FOR ITEMS 27 & 29. ITEMS 26 & 28 TO REMAIN FLUSH WITH LOCKNUT.
 - RECOMMENDED TORQUE LEVEL FOR LUGS ON K1 (ITEMS 10 & 11) IS 15 INCH LBS.
 - REF WIRE LIST THESE CONNECTIONS HAVE THREE RING TERMINALS AND REQUIRE (ITEM 82) SCREW 8-32 x 1/4" WITH (ITEM 40) LOCKWASHER.
 - REQUIRED TORQUE LEVELS FOR CERTAIN ELECTRO-MECHANICAL CONNECTIONS:

A	18 ± 2 IN-LBS FOR TERMINALS ON F1 (ITEMS 12 & 13). THE G LUG BOXES ON K1 (ITEMS 10 & 11) AND NUTS ON GROUND STUD G1.
B	16 ± 2 IN-LBS FOR 8-32 SCREW CONNECTIONS ON OUTLETS P1 THRU P6 (ITEMS 7 & 8).
C	12 ± 2 IN-LBS ON 8-32 SCREW CONNECTIONS ON CIRCUIT BREAKER CONNECTIONS CBI (ITEMS 4, 5 & 6).
 - USE NO MOUNTING HARDWARE FOR SWITCH.
 - STRAIN RELIEF SPACERS: (L)

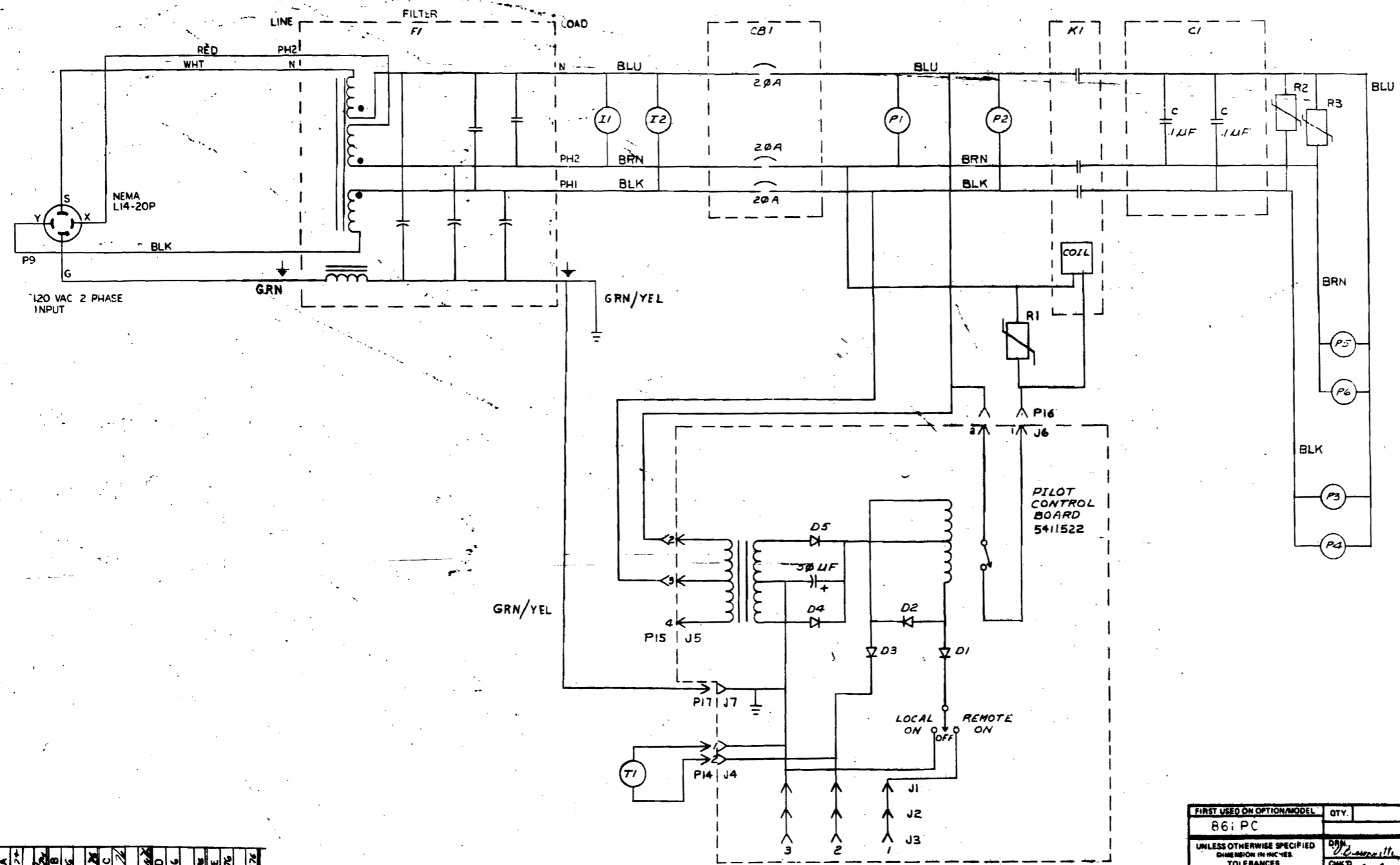
861 A	1 1/2"
861 B	0"
861 C	1 1/4"
861 F	0"

FOR PARTS LIST SEE
A-PL-861-0-0

PARTS LIST		QTY	DESCRIPTION	PART NO.	REV								
861 FC													
PARTS LIST													
<table border="1"> <tr> <td>DATE</td> <td>DATE</td> <td>DATE</td> <td>DATE</td> </tr> <tr> <td>10/10/50</td> <td>10/10/50</td> <td>10/10/50</td> <td>10/10/50</td> </tr> </table>						DATE	DATE	DATE	DATE	10/10/50	10/10/50	10/10/50	10/10/50
DATE	DATE	DATE	DATE										
10/10/50	10/10/50	10/10/50	10/10/50										
TITLE: POWER CONTROL 861													
BDD-861-0-0													
EUA 861-0-0													

NOTE:
 1. R1, R2, + R3 ARE MOV VARISTOR
 SPIKE SURPRESSORS.

This drawing and specifications, herein, are the property of Digital Equipment Corporation and shall not be reproduced or copied or used in whole or in part as the basis for the manufacture or sale of items without written permission.

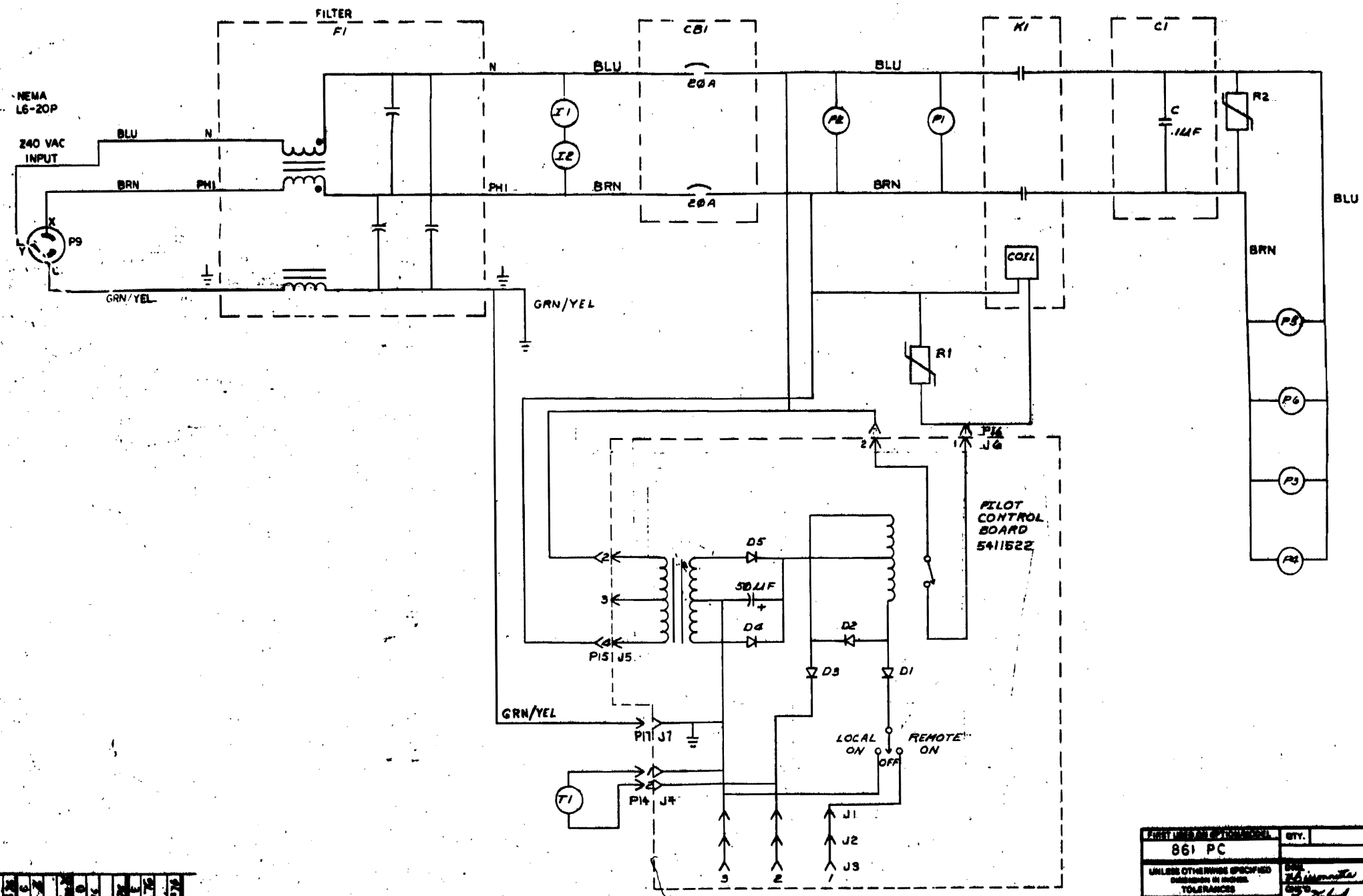


REV.	CHG. NO.	DATE	BY	CHKD.
1	1	12-10-76	R. KENNEDY	
2	1	12-10-76	R. KENNEDY	
3	1	12-10-76	R. KENNEDY	
4	1	12-10-76	R. KENNEDY	
5	1	12-10-76	R. KENNEDY	
6	1	12-10-76	R. KENNEDY	
7	1	12-10-76	R. KENNEDY	
8	1	12-10-76	R. KENNEDY	
9	1	12-10-76	R. KENNEDY	
10	1	12-10-76	R. KENNEDY	
11	1	12-10-76	R. KENNEDY	
12	1	12-10-76	R. KENNEDY	
13	1	12-10-76	R. KENNEDY	
14	1	12-10-76	R. KENNEDY	
15	1	12-10-76	R. KENNEDY	
16	1	12-10-76	R. KENNEDY	
17	1	12-10-76	R. KENNEDY	
18	1	12-10-76	R. KENNEDY	
19	1	12-10-76	R. KENNEDY	
20	1	12-10-76	R. KENNEDY	

FIRST USED ON OPTION/MODEL	QTY.	DESCRIPTION	PART NO.	ITEM NO.
861 PC				
UNLESS OTHERWISE SPECIFIED DIMENSION IN INCHES TOLERANCES				
DECIMALS	ANGLES	TITLE		
XX + .008	20' 30"	CIRCUIT SCHEMATIC (861-PC)		
X - .1		REMOVES BURRS AND BREAK SHARP CORNERS SURFACE QUALITY		
MATERIAL		NEXT HIGHER ASSY.		REV.
		B-DC-861-0		E
FINISH		SCALE	NUMBER	
		SHEET	DISP.	

Use standard wire connections, except as the notes of this equipment document and that list the components or circuit or unit to which it is part of the basis for the identification of each of them without further reference.

NOTE :
1. R1+R2 ARE MOV VARISTOR SPIKE SUPPRESSORS.



REV	DATE	BY	CHKD	DESCRIPTION
1	10/1/73	W. J.
2	10/1/73	W. J.
3	10/1/73	W. J.
4	10/1/73	W. J.
5	10/1/73	W. J.
6	10/1/73	W. J.
7	10/1/73	W. J.
8	10/1/73	W. J.
9	10/1/73	W. J.
10	10/1/73	W. J.

PART NUMBER		QTY.	DESCRIPTION	PART NO.	REV.
861 PC					
UNLESS OTHERWISE SPECIFIED TOLERANCES		PARTS LIST			
DECIMALS	ANGLES	EQUIPMENT CORPORATION			
±0.005	±0.005	TITLE			
REMOVE BURRS AND BREAK SHARP EDGES SURFACE QUALITY		CIRCUIT SCHEMATIC (861-B PC)			
MATERIAL	REV. NUMBER	REV. NUMBER	REV. NUMBER	REV. NUMBER	REV. NUMBER
	B-00-861-0	D/CS	861-B-4		6
FINISH	SCALE	DATE	BY	CHKD	REV.

This drawing and specifications, herein, are the property of Digital Equipment Corporation and shall not be reproduced or copied or used in whole or in part as the basis for the manufacture or sale of items without written permission.

DIGITAL EQUIPMENT CORPORATION MAYNARD MASSACHUSETTS				
PACKAGING INSTRUCTION			REV: <u>A</u>	DATE: <u>4-73</u>
TITLE				
861 POWER CONTROL, INTERPLANT PACKAGE				
MATERIAL REQUIREMENTS				
Quantity	Identification No.	Purchase Spec	Description	
1	7-2008 1314 0500-0	9905229	Full overlap carton	
2		9905228	Expanded polystyrene foam insert	
A/R			3-inch wide Glasflex tape	
PACKAGING INSTRUCTIONS				
Step	Procedure			
1	Set up the full over lap carton (9905229) using one strip of tape across the bottom and extending up the sides approximately three inches. See Figure 1.			
2	Place one expanded polystyrene foam insert (9905228) in each end of the carton with the slots in the foam facing inward.			
3	Place the 861 power control in the carton with the ears of the upright sliding into the slots in the foam.			
4	Coil the power cord so that it fits into the cavity in the rear of the power control.			
5	Close and seal the carton with one piece of tape across the top of the carton and extending down the sides approximately three inches.			
ENG	4/12/73	APPD	SIZE	CODE
<i>[Signature]</i>		<i>[Signature]</i>		PI
		NUMBER	REV	
		3700083-0-0	A	

DWG 8-(001)-1031-1-R671
DRA - 129

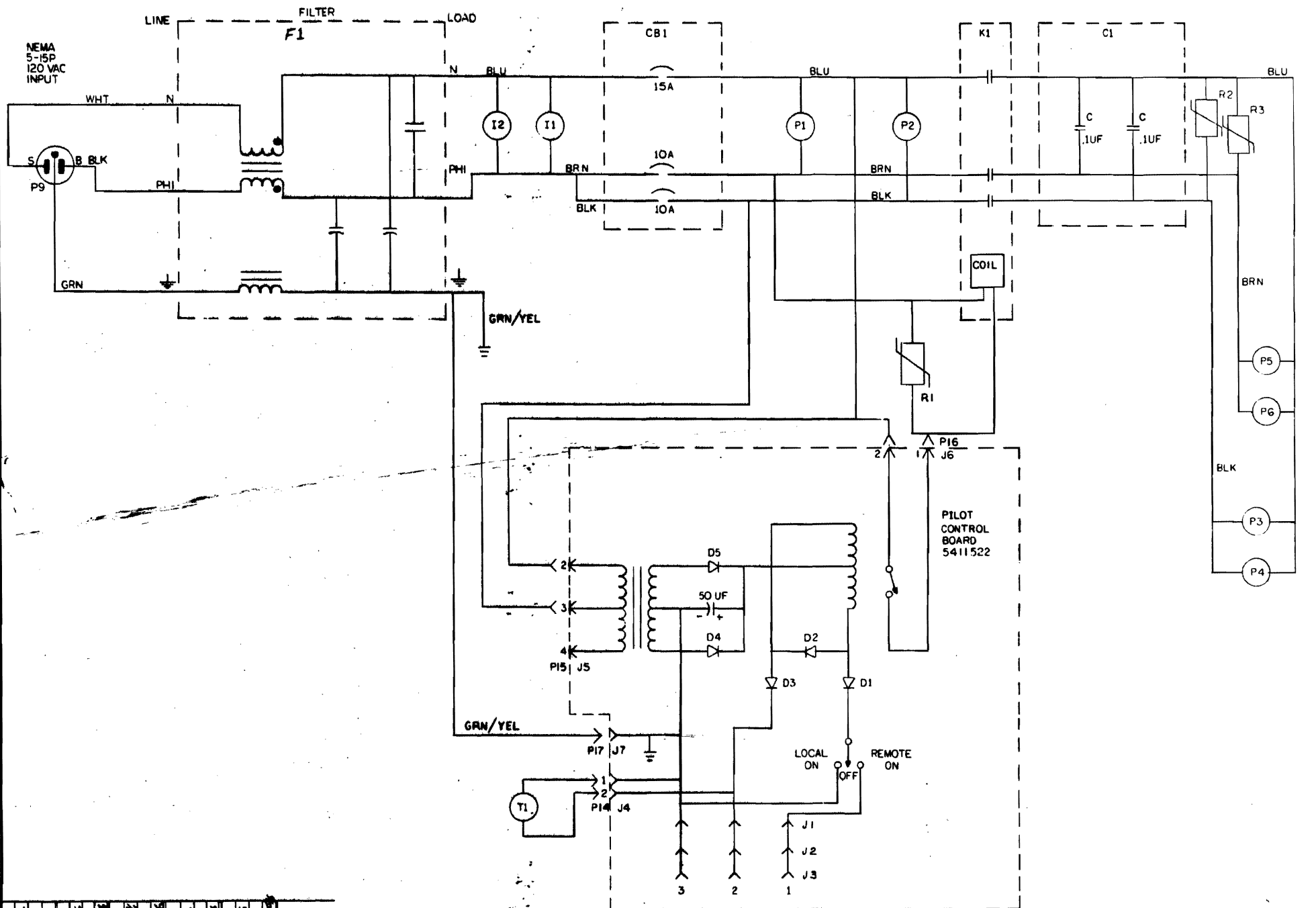
PACKAGING INSTRUCTION				REV: <u>A</u>	DATE: <u>4/73</u>
TITLE					
861 POWER CONTROL, INTERPLANT PACKAGE					
FIGURE 1					
<p>NOTE</p> <p>Make changes to the "C" size original only and rephotograph.</p>					
ENG.	APPD.	SIZE	CODE	NUMBER	REV
<i>[Signature]</i>		A	PI	3700083-0-0	A
				SHEET <u>2</u> OF <u>2</u>	

This drawing and specifications, herein, are the property of Digital Equipment Corporation and shall not be reproduced or copied or used in whole or in part as the basis for the manufacture or sale of items without written permission.

DWG-107

"THIS DRAWING AND SPECIFICATIONS HEREIN ARE THE PROPERTY OF DIGITAL EQUIPMENT CORPORATION AND SHALL NOT BE REPRODUCED OR COPIED IN WHOLE OR IN PART AS THE BASIS FOR THE MANUFACTURE OR SALE OF ITEMS WITHOUT WRITTEN PERMISSION. COPYRIGHT © 1977, DIGITAL EQUIPMENT CORPORATION"

NOTE:
PINS 2 & 3 ARE MCM V. RUSTIN SINK-DRILL TAPS.



REV.	BY	DATE	DESCRIPTION
1
2
3
4
5
6
7
8

DESCRIPTION		DWG PART NO.	ITEM NO.
UNLESS OTHERWISE SPECIFIED DIMENSIONS ARE IN INCHES			
ANGLES	CLASS OF ACCURACY	NOMINAL DIMENSION RANGE INCHES	
30° 30'	ICHECK ONE	OVER 0	UNDER 40.0
SURFACE QUALITY	MEDIUM	0.004	0.008
IN	PREFERRED	0.012	0.016
MICROINCHES		0.025	0.04
		0.063	0.1
THIRD ANGLE PROJECTION	DRN	FIRST USED ON	
REMOVE BURRS AND BREAK SHARP CORNERS	CHK'D	digital	
DO NOT SCALE DWG	PROJ. ENGR.	TITLE	
MATERIAL	NEXT HIGHER ASSY.	CIRCUIT SCHEMATIC SHEET	
FINISH	SCALE	SIZE	CODE
	SHEET	D	05
	OF	DIST	

DEC FORM NO. 200-200-C