

Using the System Policy Editor

Objective

To become familiar with the System Policy Editor by:

- using the System Policy Editor on the PDC to edit the policy for the Operators Group to allow shortcuts to be shown
- then add Native Window and TPS System Status Display shortcuts to the GUS node's Operator and Supervisor desktop profiles.

In This Module

- Overview of System Policy Editor
 - Edit Operators Group Policies
 - Edit Supervisor Group Policies
 - Create Shortcuts for Operator Desktop
 - Create Shortcuts for Supervisor Desktop
-

Using the System Policy Editor

Policies

- Modifies Registry entries at time of log on
- Restricts or opens a user's environment
- User, Group, Machine

Using the System Policy Editor

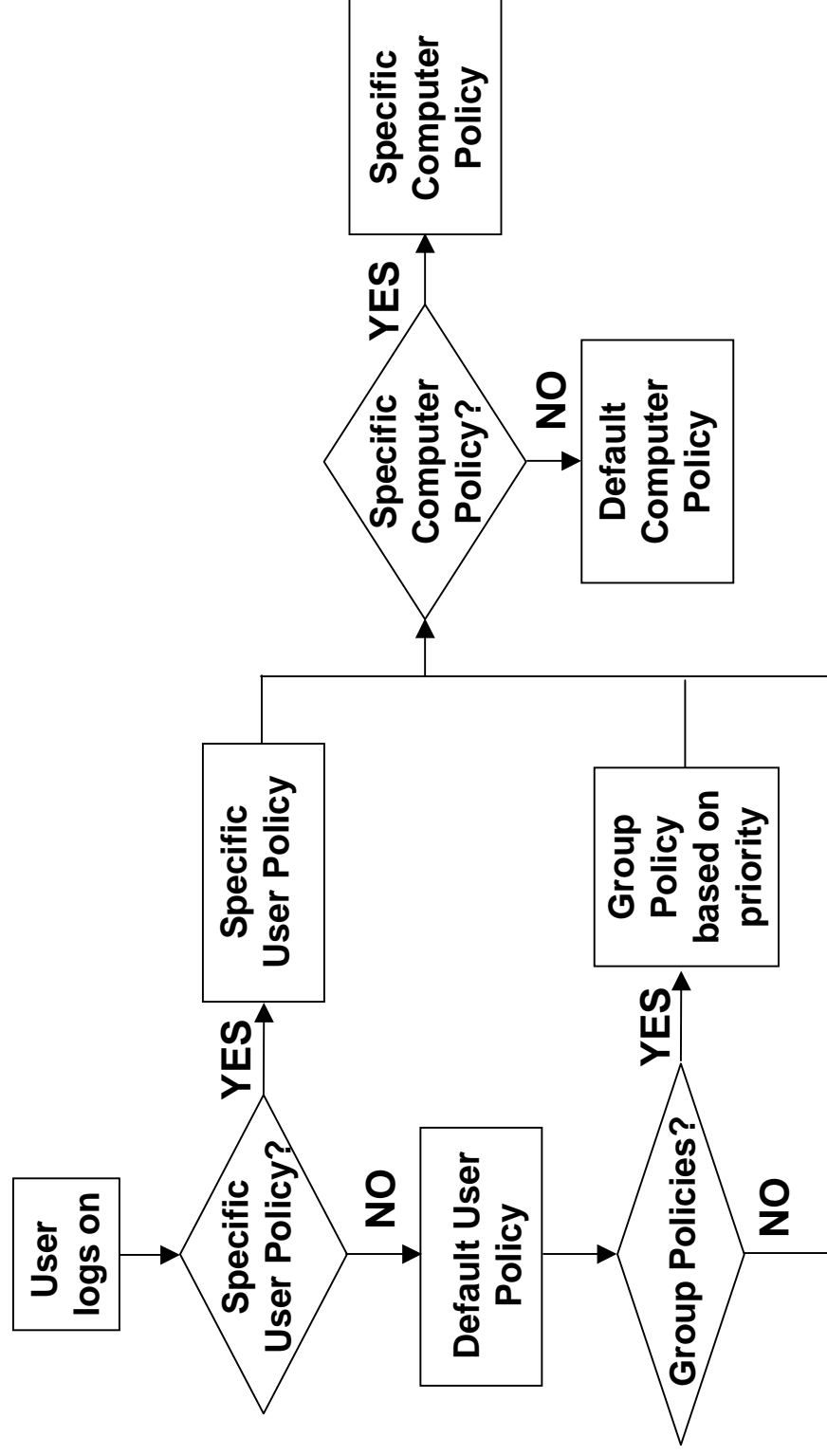
Configuration

Start > Programs > Administrative Tools (Common) > System Policy Editor

- Default User, Default Computer
- Add User - starts with default user
- Add Group
- Add Computer - starts with default computer

Using the System Policy Editor

Flowchart

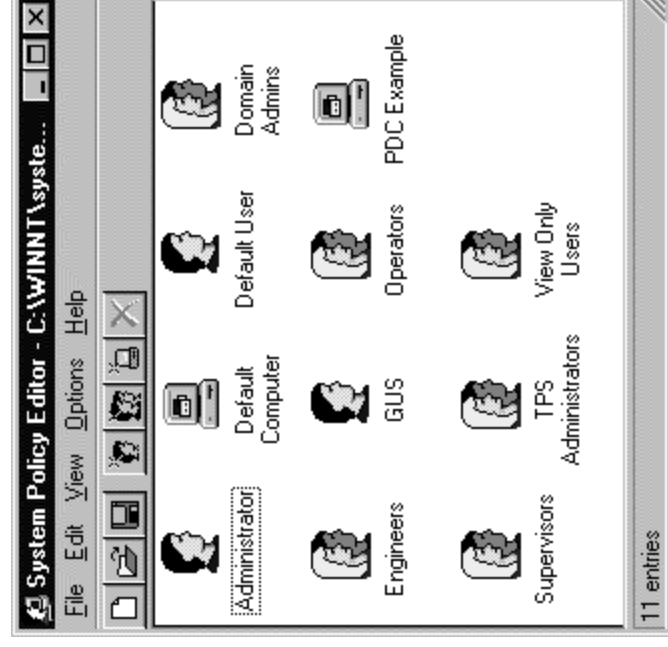


Using the System Policy Editor

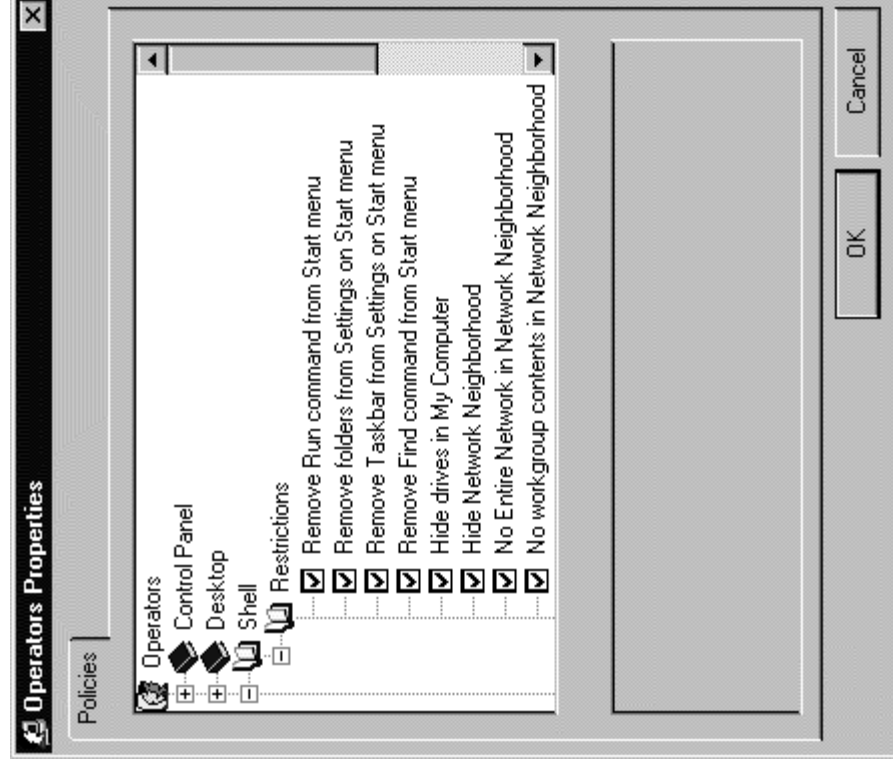
NTConfig.POL

- Generated by Honeywell
- Installed by TPS Setup Utility
 - found in `|winnt\system32\repl\export\scripts` on PDC
- Replicated to `|winnt\system32\repl\import\scripts` to all nodes
 - Standard NT Replication
 - PDC_COPY POL

Using the System Policy Editor

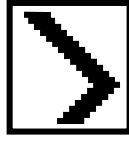


Using the System Policy Editor

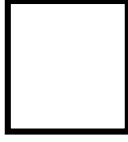


Using the System Policy Editor

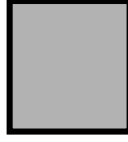
Hide Drives in My Computer



= Modify registry so drives are hidden



= Modify registry so drives are NOT hidden



= Do NOT modify registry (leave as previously set)