
Honeywell

PlantScape Controller Implementation

Lesson 1

Import\Export

9 - 3

Notes

Introduction

The purpose of this Lesson is to give you the knowledge to be able to incorporate parts from one Control Builder Project into another. The method used for this is called Import\Export. It is a tool contained in Control Builder. To try this functionality, you will create a new CM and Export it to text files. You will then Import from a classmate's Project Export files into your project.

Objectives

- ❶ Create a new CM named CM_FV#01 (where # is your team number)
- ❷ Export the new CM to text files
- ❸ Import a classmate's CM_FV#01 into your project



Background

- Your Project File can contain a great many items. It may contain IOMs, CMs, and SCMs for up to ten C200 controllers
- There is a tool which allows the copying of some or all of a project to insert into another project. That tool is the Import\Export tool.
- Import\Export is accessed from Control Builder
- Export copies the designated portion of the project from Control Builder to text files
- Import copies from the designated text files into Control Builder's Project tab
- Both Import and Export have useful features which we will examine in this module
- First we will examine the Export function

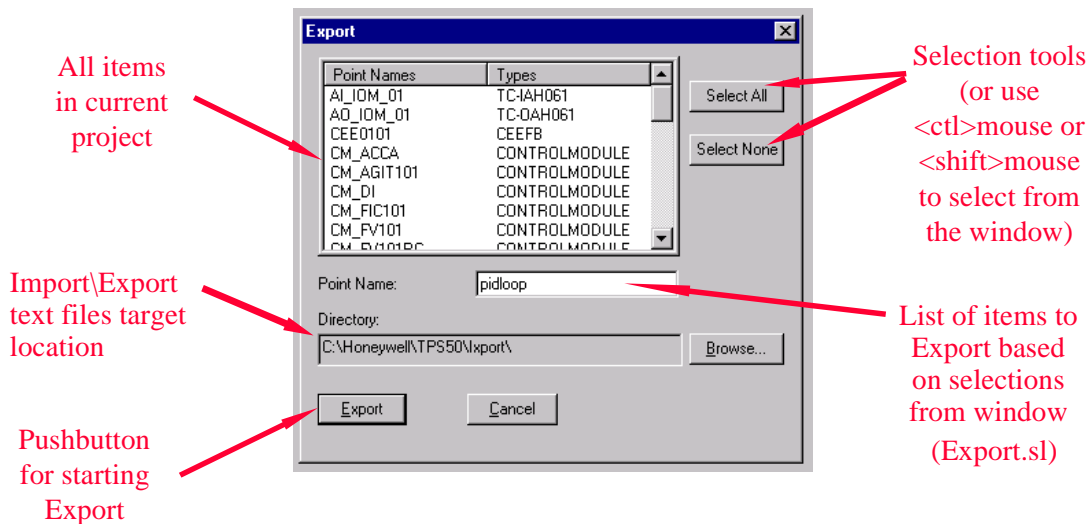
9 - 4

Notes

Honeywell

Export

- In Project, **Copy** CM#_FV101 and name it CM_FV#01
- Select **File, Export** to call up the dialog box shown:



9 - 5

Notes

Export

The Export function copies designated Control Builder Project items to the directory shown in the Export dialog box. The items are converted into text files, one file for each function block along with other files used by the Import\Export function.

An additional file, Export.sl, is created. It is a selection list which contains the tag names of the items chosen to Export.

The default file location for the Export is Honeywell\tps50\Iexport

Honeywell

Export ...*continued*

- Scroll down in the Project window and find CM_FV#01 created in the last step
- Select the CM and note that it now appears in the **Point Name** port
- Select the **Export** pushbutton to cause the CM to be put into a text file format in the target path location.
- Locate the resulting files in windows Explorer. Note that there is a file for each Function Block as well as a file for the overall configuration. Also, there is a .bcd file used internally by PlantScape, and a Selection List called Export.sl. Note the small size of the files (Your entire class project will fit on a single floppy in Export format.)
- Call up the text file for the DEVCTL block in Note Pad and examine it. Note the [SYMBOL ATTRIBUTES] and [CONNECTIONS] portion which are required for Importing
- We will now Import a CM into the Project

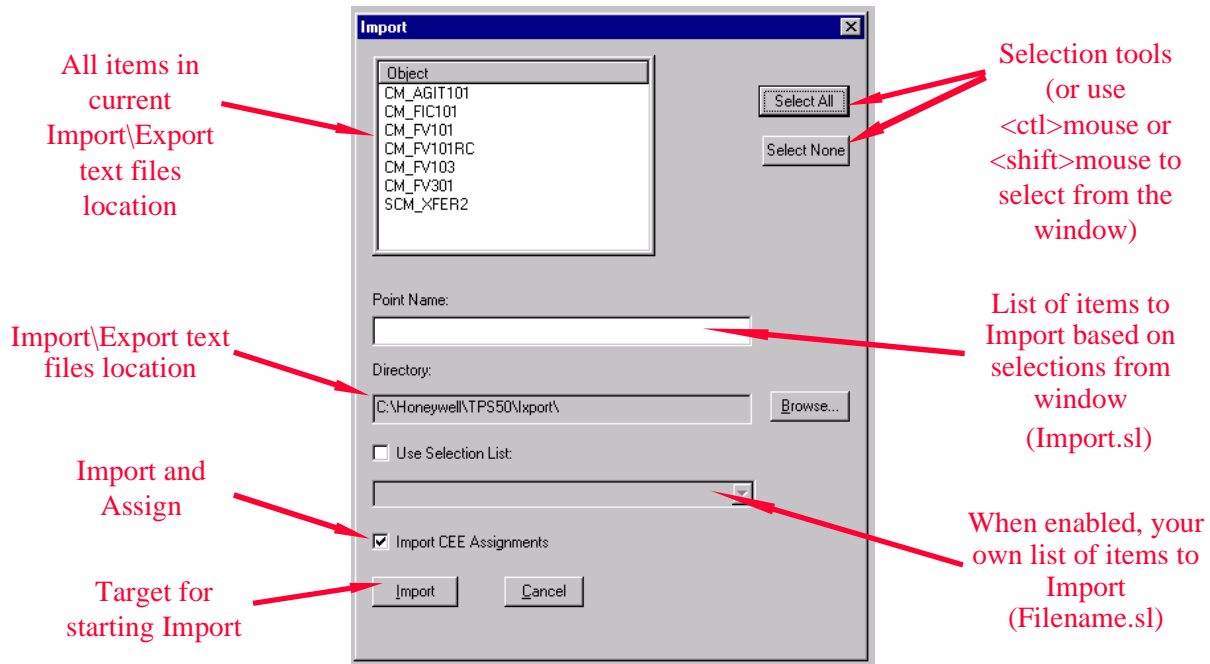
9 - 6

Notes

Honeywell

Import

In Control Builder, select **File, Import** to call up the dialog box shown:



9 - 7

Notes

Import

The Import function copies designated items from the Import\Export text files, located in the directory shown in the Import form, to the Control Builder Project.

The items to be Imported are listed in a file called a selection list. If items are selected from the Import form window, the list created is called Import.sl. You can use notepad to create your own selection list as well. To use this type of list, copy your .sl file to the same directory that contains the item text files, check the Use Selection List check box, and browse to the list file. The items contained in the list will appear in the Point Names port.

If the items were assigned in the source project file, and the same controller name exists in the target project file, assignment to the controller can be done at Import. If this is not desired, do not check the Import CEE Assignments check box. The Imported Items will then appear under the project root.

Honeywell

Import ...continued

- Select the **Browse...** pushbutton and find a classmate's Export Directory. Note the list of items in the Import\Export text files location on that PC
- Select the CM_FV#01 point Exported in the last step. Note that it now appears in the **Point Name** port
- Uncheck the **Import CEE Assignment** check box
- Select the **Import** target
- Notice that the CM is now in your project under the Root, since Assignment was not Imported
- The CM can now be modified, assigned, and loaded to a controller

9 - 8

Notes

Honeywell

This completes....

PlantScape Controller Implementation

Lesson 1

Import\Export

9 - 9

Notes
