
Honeywell

PlantScape Controller Implementation

Lesson 3

Loading, Activating and Operating Control Modules

3 - 35

Notes

Introduction

The purpose of this Lesson is to give you the knowledge to be able to load, activate and operate control strategies. You will become familiar with the operation of CMs from Station as well as from Control Builder.

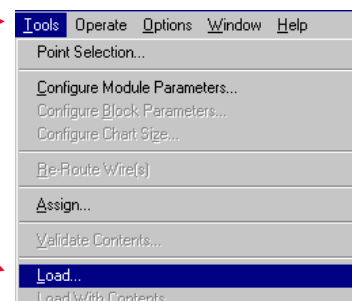
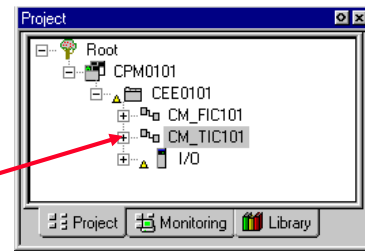
Objectives

- ❶ Understand Control Builder procedures that apply to CM configuration
- ❷ Understand the steps necessary to load and activate a control strategy
- ❸ Understand the characteristics associated with the **Project** and the **Monitoring** views of Control Builder

Honeywell

Loading a Control Strategy

- Ensure that the **CM#_TIC101** and **CM#_FIC101** are closed
- Open the **Project** tab in Control Builder
- Expand the Root Directory
- Left click on **CM#_TIC101**
- Click the **Tools** Menu
- Click **Load**
- Click **Continue** to load your CPM
- Repeat for **CM#_FIC101**



3 - 36

Notes

Before you begin

Once you have configured a control strategy, you must load the strategy to the controller before activating it.

Your strategy includes your CPM, CEE, IOMs, and CMs. Each of these are loaded in a simple procedure.

If you do not close your CM before loading it you will encounter a lock error, and will be forced to cancel the load.

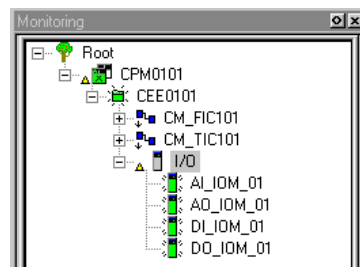


For more information about loading and activating a control strategy refer to *Control Building Guide, Control Strategy Loading*.

Honeywell

Loading a Control Strategy ...continued

- Click **Monitoring** to go to the Monitoring (loaded) tab
- Activate **CM#_TIC101** and **CM#_FIC101**



3 - 37

Notes

Activating a Control Strategy

Once you have configured and loaded a control strategy you can activate it. All objects load in the inactive state to the controller.



For more information about loading and activating a control strategy refer to *Control Building Guide, Control Strategy Loading*.

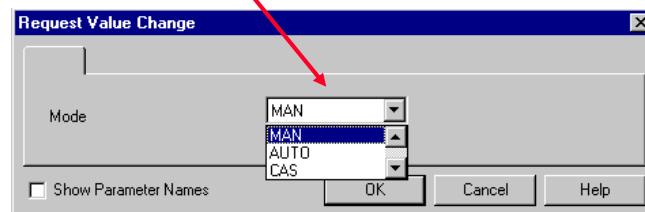
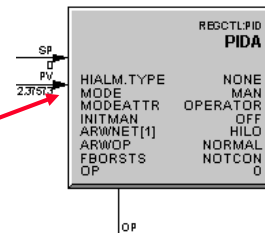


Once you activate the CM, it turns green in the **Monitoring** tab. Remember that the CEE must be active for anything assigned to the CEE to work. So, even if a CM is active, it won't do anything unless the CEE is also active.

Honeywell

Configuring CMs for Cascade Operation

- Double click on **CM#_FIC101** to open it in the Control drawing area
- Ensure that **PIDA** is in **MAN** mode (If it is not in **MAN** mode, place it in **MAN** mode)
- To place the **PIDA** block in **MAN** mode double-click on the word **MODE** on the blocks faceplate
- Select **MAN** from the drop down list



3 - 38

Notes

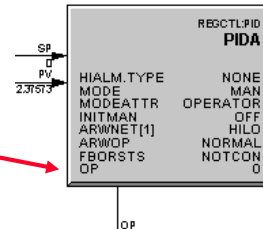
Configuring CMs for Cascade Operation

When changing the **OP** value, the **PID** block must be placed in **MAN** mode. If it is not you will be prompted with an invalid mode error.

Honeywell

Configuring CMs for Cascade Operation ...continued

- Double Click **OP** on the **PID** block's face



- Enter a Value in % of **40** and Click **OK**

The dialog box is titled "Request Value Change". It contains a text field labeled "OP Value in %" with the value "40" entered. Below the text field is a checkbox labeled "Show Parameter Names". At the bottom are three buttons: "OK", "Cancel", and "Help". A red arrow points to the "40" in the text field.

- This will result in the **PV** climbing to a flow of approximately 2000 lb/hr.

3 - 39

Notes

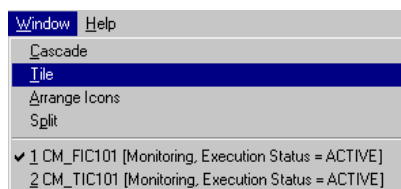


For more information about changing Function Block Parameters refer to *Control Building Guide, Control Module Creation, Requesting Value Change for Configuration Parameters*.



Configuring CMs for Cascade Operation ...continued

- Double-click **MODE** on **PIDA's** face and set the **MODE** to **Cascade (CAS)**
- Leave **CM#_FIC101** open and double-click on **CM#_TIC101** in the **Monitoring** tab
- Change its **PIDA.MODE** to **AUTO**
- Enter a value of **40** on the Set Point (**SP**) Pin
- Select
 - **Window**
 - **Tile**



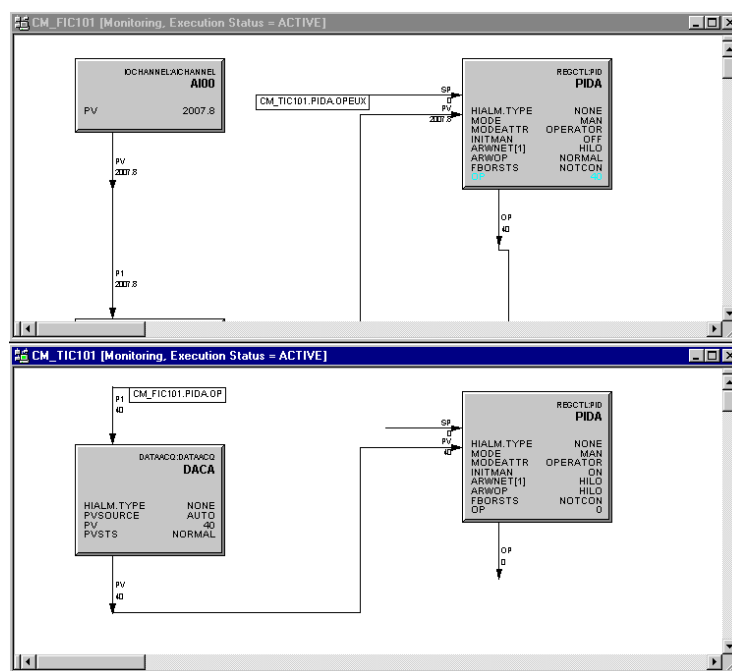
3 - 40

Notes

Honeywell

Configuring CMs for Cascade Operation ...continued

- This will permit you to see CM#_TIC101 and CM#_FIC101 operating together



3 - 41

Notes

Honeywell

Configuring and Operating Group #2

- Go to station, log on as Manager and configure Group #2 in the following sequence



- Operate your Heat Cascade from Group #2 in station

3 - 42

Notes

Configuring and Operating Group #2

The password for Manager access level is mngr

CM#_TIC101 Slot 1

CM#_FIC101 Slot 2



For more information about working with and configuring Station refer to *Operators Guide, Monitoring and Controlling, Using Group Displays*.

Honeywell

This completes....

PlantScape Controller Implementation

Lesson 3

**Loading, Activating and Operating
Control Modules**

3 - 43

Notes
