

Lesson 3. Control Builder

Objectives:

- Define Control Builder functionality
- Start Control Builder
- Describe the contents of Control Builder libraries

Control Builder Functionality

- **define I/O modules in the PlantScape rack**
- **create Control Modules and Sequential Control Modules**
 - **interface to automated control systems**
- **define Control Execution Environment (CEE)**
- **define point detail parameters**

How to Start Control Builder

Start →

Programs →

Engineering Tools →

Control Builder

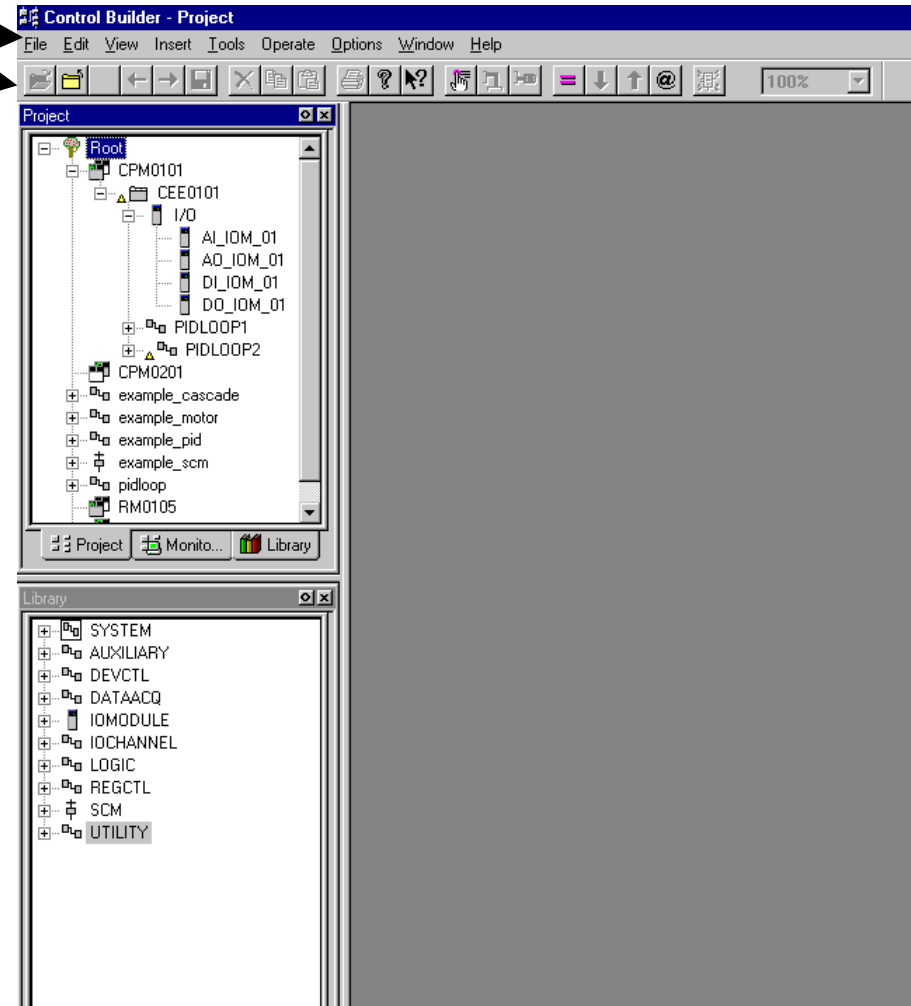
Control Builder Security (R300)

- **Logon Required -- PlantScape Station operator-type security ID and Password**
- **Levels L1, L2, OPER, and SUPV are view only**
- **Levels ENGR and MNGR allow configuration**
- **must be server-connected to access Control Builder**
- **up to four concurrent logons from remote Control**

Builders allowable

Open Tree Views

- Use *File -- Open Tree* menu commands or
- Click on the *Open Tree* icon (left most icon)



Control Builder Tabs

- **Library**
 - lists all available Function Blocks grouped into type categories
- **Project**
 - displays CMs and SCMs in the current project
- **Monitoring/Loaded**
 - **offline**: displays CMs and SCMs that were last loaded to the Control Processor Module (CPM)
 - **online**: displays CMs and SCMs that are currently running in the CPM

Control Builder Tabs

- make all changes in the Project view
- use Monitoring view to monitor the controller database