
Honeywell

PlantScape Controller Implementation

Lesson 2

Using Control Builder

1 - 27

Notes

Introduction

The purpose of this Lesson is to give you the knowledge to be able to open and operate Control Builder. After you complete this Lesson you should be able to identify the procedures to operate Control Builder.

Objectives

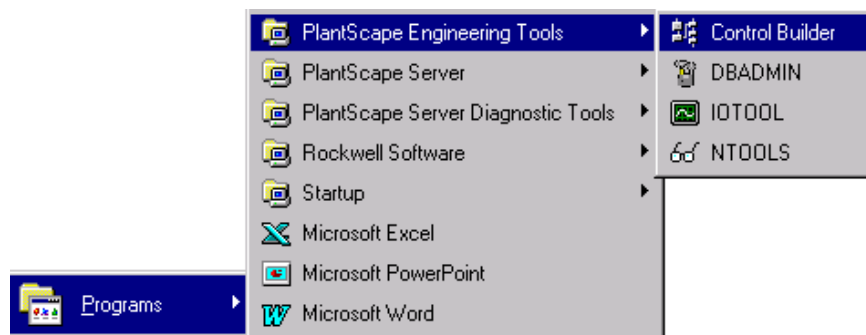
- ❶ Given a list of function tabs, correctly identify the tab used to make structural changes to an existing Control Module.
- ❷ Given a list of function tabs, correctly identify the tab used to change parameters on line
- ❸ Given a statement on backing up your controller data base, identify whether the statement is correct.



Starting Control Builder

➤ From the Windows NT Taskbar

- From the lower-left corner of your Windows NT desktop, click
 - **Start**
 - **Programs**
 - **PlantScape Engineering Tools**
 - **Control Builder**



1 - 28

Notes

Starting Control Builder

You can start up Control Builder from Windows using

- Windows NT Taskbar by navigating the menus

Additionally, once Control Builder is running it may be accessed by selecting it from the NT taskbar

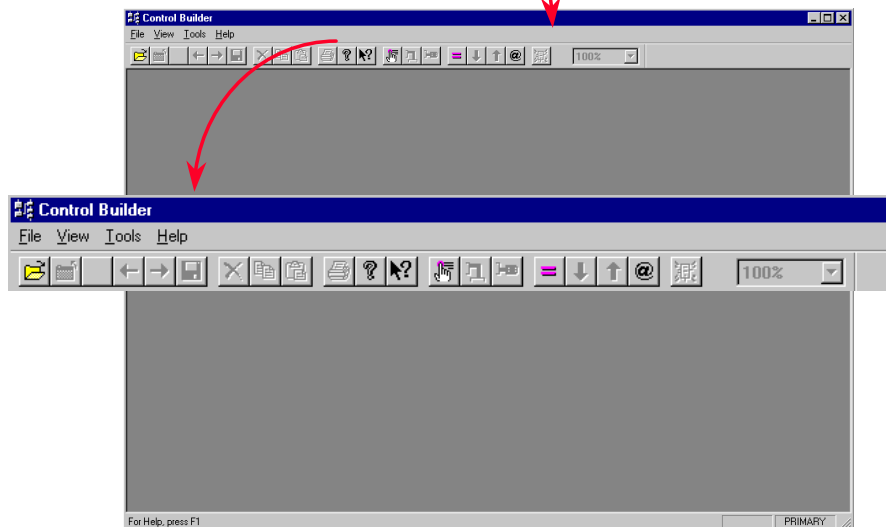
Note: As of R300, Control Builder requires a logon account in the server to which you are connecting.

Honeywell

Using the Toolbar

➤ Toolbar

- Not all of the toolbar features will be available until Control builder features have been opened



1 - 29

Notes

Toolbar

The toolbar gives you a graphical easy-to-use interface for accessing the different tools available from Control Builder. The tools can also be found by accessing the dropdown menus.



➤ **Toolbar**



1 2 3 4 5 6 7 8 9 10 11 12 13 14 15 16 17 18 19 20

- | | |
|----|---|
| 1 | Open Tree Window |
| 2 | Close active Control Drawing or Tree Window |
| 3 | Move to the Left |
| 4 | Move to the Right |
| 5 | Save the active Control Drawing |
| 6 | Delete the selected object |
| 7 | Copy selection and place on clipboard |
| 8 | Paste clipboard contents |
| 9 | Print selected pages of active document |
| 10 | Display program information |

- | | |
|----|---|
| 11 | Display help information |
| 12 | Point Selection Command |
| 13 | Create a wire for connecting function blocks |
| 14 | Create a Parameter Connector |
| 15 | Assign Modules to a Control Execution Environment (CEE) |
| 16 | Load selected items |
| 17 | Upload parameters of selected items |
| 18 | Substitute Name List Command |
| 19 | Toggle single item state |
| 20 | Change scale dimensions |

1 - 30

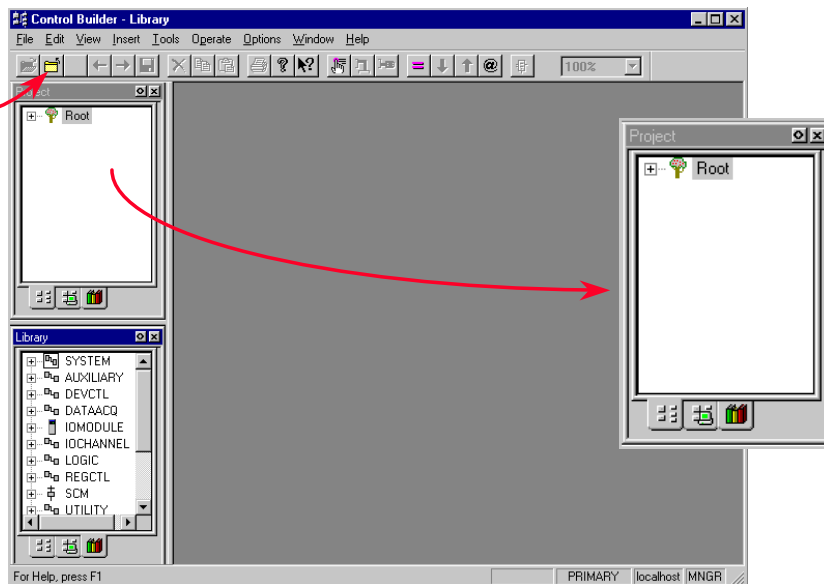
Notes

Honeywell

Opening and Using Tree Views

➤ Opening Tree Views

- Clicking on the open tree window button will open the first area on the left side of your screen



1 - 31

Notes

Opening Tree Views

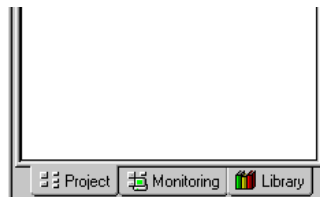
Clicking on the File drop down menu then selecting Open Tree Window will also open the tree view in the drawing area. An additional tree window display may be opened by clicking on the open tree tree window button a second time. This will permit you to have two views displayed at the same time.

The default for Control Builder is two tree views open on the left border of the main window.



➤ **Using Tree Views**

- Once the tree view is open you will have a choice of 3 selection tabs
 - **Project** Displays your CPM, IOMs, CMs and SCMs in the current project
 - **Monitoring** Displays all objects that have been loaded to the Process Control Module (CPM)
Permits active modules to be viewed during process
 - **Library** Displays all available Function Blocks grouped into type categories



1 - 32

Notes

Project Tab Functionality

- Create new CMs and SCMs
- Define parameter configurations for CMs and SCMs
- Wire components of CMs and SCMs together
- Configure CM and SCM alarms
- Assign CMs and SCMs to CEE
- Open and Edit existing CMs and SCMs
- Save changes
- Load CMs and SCMs to the CPM

Monitoring Tab Functionality

- Open CMs and SCMs for online monitoring
- Activate / Deactivate CMs and SCMs
- Update changes to a project file
- Change controller parameters and upload to the Engineering Repository (ER)
- Change monitoring / configuration parameters on the faceplate of CM blocks



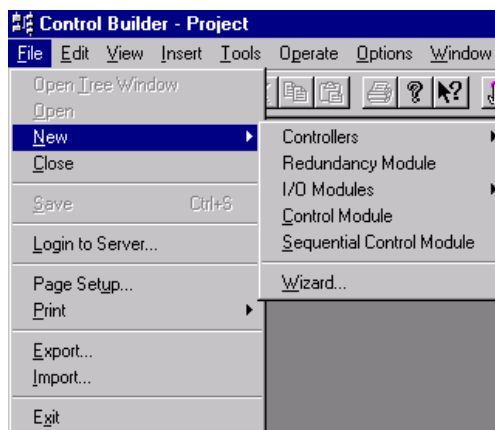
All structural changes to the database must be made in the Project view. Once all changes are complete they must then be reloaded and reactivated



Creating New Devices

➤ Creating From the List

- From the Upper-Left corner of your Windows NT desktop, click
 - File
 - New
- From here you will have a choice of
 - Controllers
 - Redundancy Module
 - I/O Modules
 - Control Module
 - Sequential Control Module
 - Wizard ...



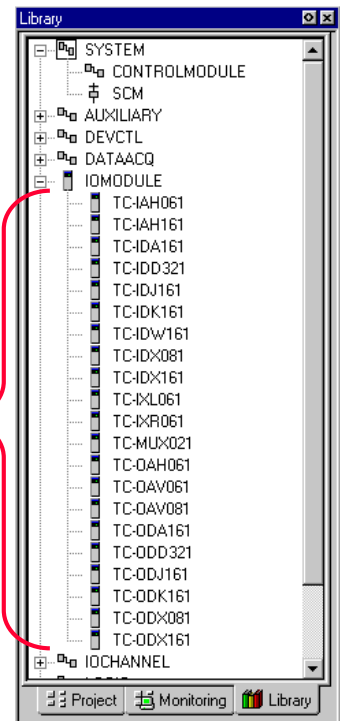
1 - 33

Notes

Honeywell

➤ From the Library Tab

- Select the **Library** tab from the tree view to display a list of devices
 - **SYSTEM**
 - Control Module
 - SCM
 - **IOMODULE**
 - (All available I/O Modules)



1 - 34

Notes

Honeywell

This completes....

PlantScape Controller Implementation

Lesson 2

Using Control Builder

1 - 35

Notes
